



Sales Office  
Lodha Meridian,  
Eden Square,  
Off KPHB Road,  
Near HITEC City MMTS Station,  
Hyderabad 500085

Corporate Office  
Lodha Excelus,  
N.M. Joshi Marg, Mahalaxmi,  
Mumbai 400 011  
T: +91 - 22 2302 4400  
F: +91 - 22 2300 0693  
[www.lodhagroup.com](http://www.lodhagroup.com)

Life today takes us across borders. Whether it's a quick business trip to Europe or a family getaway to an island off Indonesia, we're constantly exposed to new cultures, cuisines and ways of living. We learn to take some of the comforts for granted and gradually get used to the many luxuries experienced along the way. Mundane residential genericism has always put a dampener on returning home. Until now, that is.





The International way of life  
has landed here.

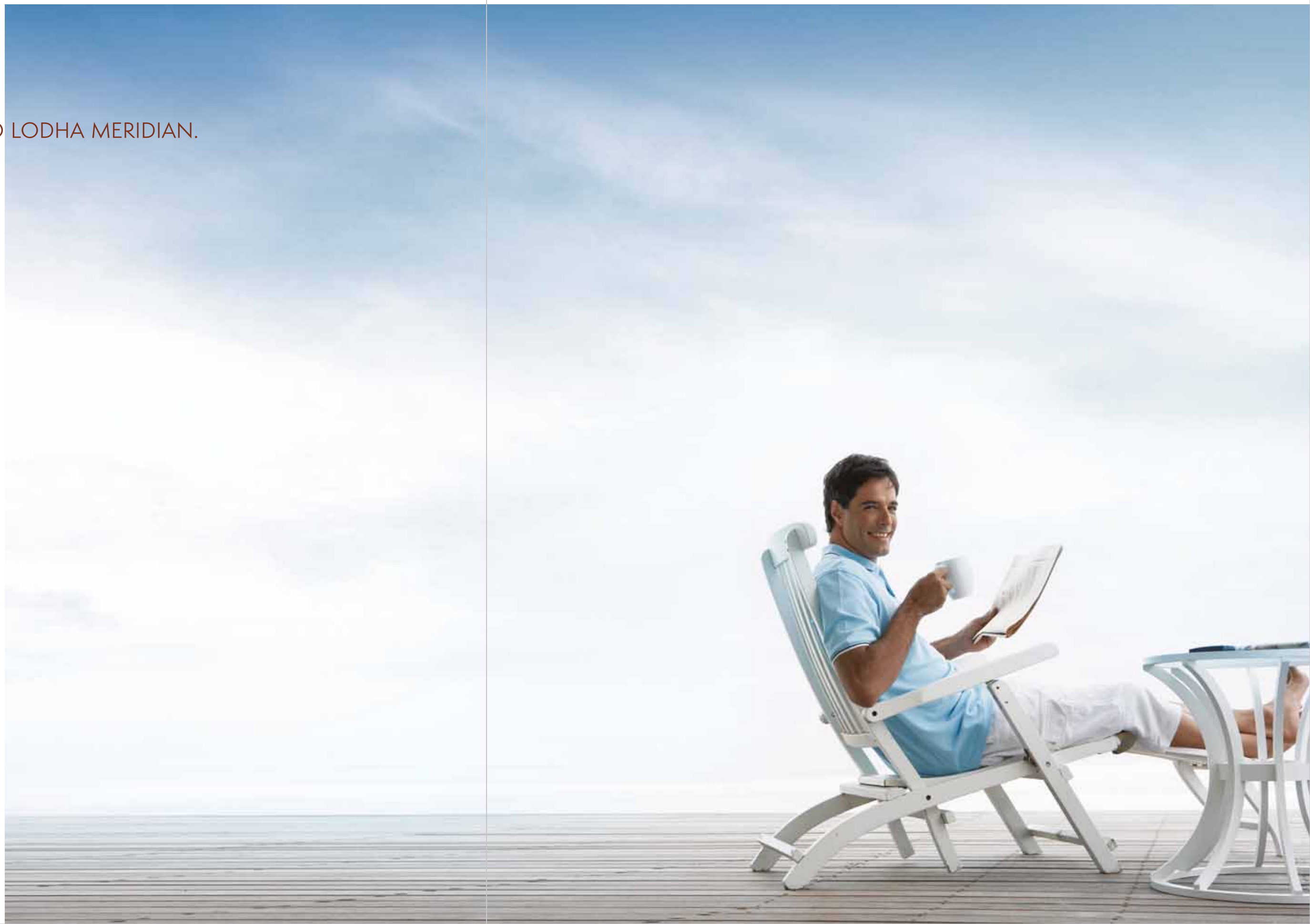




A luxurious  
headquarters for today's  
global citizens.



WELCOME TO LODHA MERIDIAN.



At the heart of the emerging new business centre of Hyderabad, these high-rise towers fuse beautiful façades with a generous dose of public space, thanks to the architects' innovative approach to construction. The various units, including two and three-bed apartments, are intricately planned, with strict attention to quality materials and a wise space allocation that conveniently adapts to contemporary living needs.





The bedrooms are ample, the kitchens are spacious, the amenities are aplenty, and the life within raises the bar in one of the most elegant areas of the city.



A  
CONTEMPORARY  
LIVING SPACE.  
SET IN A  
STYLISHLY MODERN  
LOCATION.

Lodha Meridian is located in the city's most energetic and sought-after new area – Eden Square. It's just minutes away from HITEC City and within close proximity to social hubs like Jubilee Hills and Banjara Hills.

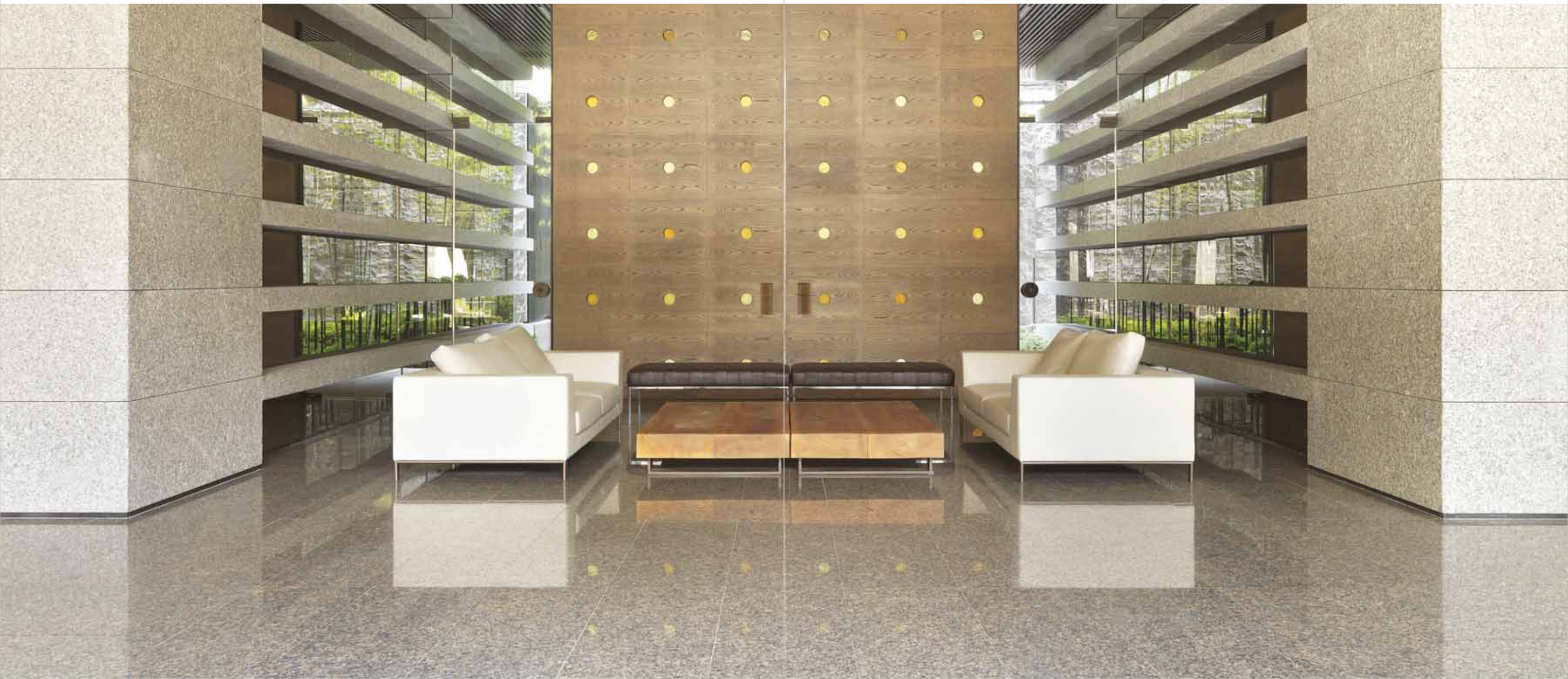
The atmosphere is upbeat and fashionable, just like the people who choose to live around here.





## YOU DON'T JUST ENTER LODHA MERIDIAN, YOU ARRIVE.

Driving in to the property is as much a thrill as owning a part of it. Before the magnificent towers can leave an impression, the surroundings will. Communal gardens, shaded sit outs, water bodies and lush, landscaped greens roll out a refreshing welcome to the dominating entrance lobby that wows with its serenity and space.







## THE GLOBAL LIFE JUST GOT LOCAL.

Designer landscapes. Wooden sundecks. Wi-Fi hotspots.  
It's all here now.





The apartments exhibit modern design that challenges the stagnant approach that had taken root in the city's opulent standards. Residences are open from three sides – making undisturbed views an inherent feature – whilst each apartment is indulgent in every way. Besides beautiful sky decks, there's Marbltal covered living and dining areas, wooden flooring in all bedrooms, generous bathrooms with Roca\* and Kohler\* trimmings and lavish kitchens. Not to forget urban necessities like air-conditioning and Wi-Fi thrown in for yesterday's sake.

# CHECK-IN TO A LIFETIME OF PLEASURE.



\*or equivalent







NEW YORK.  
SINGAPORE. ITALY.

Your home would fit in anywhere.





## YOUR NEIGHBOURHOOD VIEW STRETCHES ACROSS THE CITY.

Living in a high-rise residence is not everyone's cup of tea. Certainly if you don't enjoy all-encompassing views, and the peace and quiet that comes from distancing yourself from noise and air pollution. Tranquil evenings, the crisp morning air or glorious sunsets take some getting used to.



Shot on location



## THERE IS A DOWNSIDE TO LIVING HERE.

Staying in stylish hotel suites will no longer be a pleasure.



## EXPERIENCE AN ALL NEW HIGH.

340 ft. above the ground, the sky lounge emulates swish rooftop bars found in Barcelona, Singapore and Shanghai. It deliberately strives for a low-key atmosphere where residents will be equally at home sipping a few cocktails with friends, or coming in alone with an iPad. This glass-walled rooftop sanctuary offers views of the city from sumptuous vantage points and includes a discotheque, library and a coffee bar.







LIVE IT UP.  
LIVE IT DOWNSTAIRS  
TOO.

An elevator ride away from each private apartment lies yet another world of privileges. The community space below is dotted with luxurious sun-soaked surprises like swimming pools, water sport activities and a lawn for barbeques and parties. Adrenaline scales up at the clubhouse with online gaming zones, badminton courts and a high-power gym. Should work come before play, there's a business centre fitted with every necessary gadget and gizmo to stay wired.







## BALANCING WORK AND PLAY JUST GOT EASIER.

Conference facilities.  
Barbeque gardens. Gaming lounges.





## FAMILY MEMBERS WILL ENVY ONE ANOTHER.

You can't take playtime seriously enough, as your children will discover in the expansive kids' play area. A special rubber surface ensures that safety is also woven into the fun.

Senior family members too will feel a spring in their step, with special conveniences like the elders' corner, a Ganesha temple and a sit-out pavilion.







RACHMANINOFF, JIMI HENDRIX OR  
JOHN COLTRANE?  
LET YOU ALTER EGO OUT TO PLAY.

Inside the busy professional, lurks the musician.  
At Lodha Meridian you have the rare opportunity to  
indulge your passions, with the finest facilities at your  
doorstep. Hone your skills – be it the guitar, violin, piano  
or saxophone. If living a truly rich life is an art, you have  
every opportunity to master it at Lodha Meridian



## EVERYTIME YOU DANCE YOU TURN INTO A BETTER VERSION OF YOU.

Every day brings a chance for you to draw in a breath, kick off your shoes, and dance. Find fitness in what you like to do the best. Lodha Meridian will leave you with no excuses to stay fit with exclusive Zumba sessions right at your doorstep.





When you blame, you open up a world of excuses, because as long as you're looking outside, you miss the opportunity to look inside, and you continue to suffer. Yoga has become important in the lives of many contemporary Westerners, sometimes as a way of improving health and fitness of the body, but also as a means of personal and spiritual development. Yoga classes at your own club, with our complements.

MOST PEOPLE WANT  
A FITNESS REGIME THAT  
SHAPES THE BODY.  
YOU LOOK FOR ONE THAT  
ALSO STRENGTHENS THE SOUL.





## FITNESS: BEING YOUR LIFESTYLE

The mind, when housed within a healthful body, possesses a glorious sense of power. "Contrology is designed to give you suppleness, natural grace and skill that will be unmistakable reflected in the way you walk, play and work" said Joseph Pilates. At Lodha Meridian stay fit and balanced with Pilates.



# EVEN THE AIR AND LIGHT IS NOTHING BUT THE BEST.

Relying solely on air-conditioning is passé. With specially engineered cross-ventilation paths, your home will stay cool despite the summer's best efforts. And natural, bright lighting relegates gloomy ambiances to a thing of the past.



# LANDSCAPE MASTER PLAN:

- |                        |                          |                     |                      |
|------------------------|--------------------------|---------------------|----------------------|
| 1. Entrance Gate       | 6. Outdoor Party Area    | 11. Pathway         | 16. Ramp To Basement |
| 2. Drop-off Area       | 7. Pool Deck             | 12. Trellis         | 17. Water Feature    |
| 3. Car park            | 8. Swimming Pool         | 13. Badminton Court |                      |
| 4. Club House Drop-off | 9. Kids' Pool            | 14. Cricket Court   |                      |
| 5. Club House Plaza    | 10. Children's Play Area | 15. Temple          |                      |





# LIVING IN THE SKY? THE PRIVILEGES GO ON FOR MILES.

## INTERNAL AMENITIES

- Fully air-conditioned and Wi-Fi homes
- Laminated wooden flooring in all bedrooms
- Marbltal in dining/living and passage
- Lavish sundecks
- Imported bath fittings  
(Jaquar, Roca/Kohler or equivalent)
- Separate pooja room
- French windows in select master bedrooms
- Designer ceramic tiles in all bathrooms
- Spacious storeroom in kitchen
- Vaastu compliant homes
- Anodized aluminium finish on railings
- Homes with 3 sides open
- Spacious utility area

## EXTERNAL AMENITIES

### Wi-Fi terrace sky lounge

- Lounge
- Discotheque
- Pantry

### Clubhouse and recreation facilities

- Adults’ swimming pool
- Kids’ swimming pool
- Gym
- Café
- Library
- Poolside barbeque area
- Kids’ play area
- Elders’ corner
- Party lawn
- Multipurpose hall
- Ganesha temple

## G.A.M.E.Z. (Gaming & Modern Entertainment Zone)

- Networked gaming platforms with motion gaming
- Pool/Snooker
- Foosball (Table Football)
- Ping pong
- Water polo
- Pool volleyball
- Cricket pitch
- Badminton court
- Other indoor games (chess, carrom, etc.)

## ARCHITECTURAL FEATURES

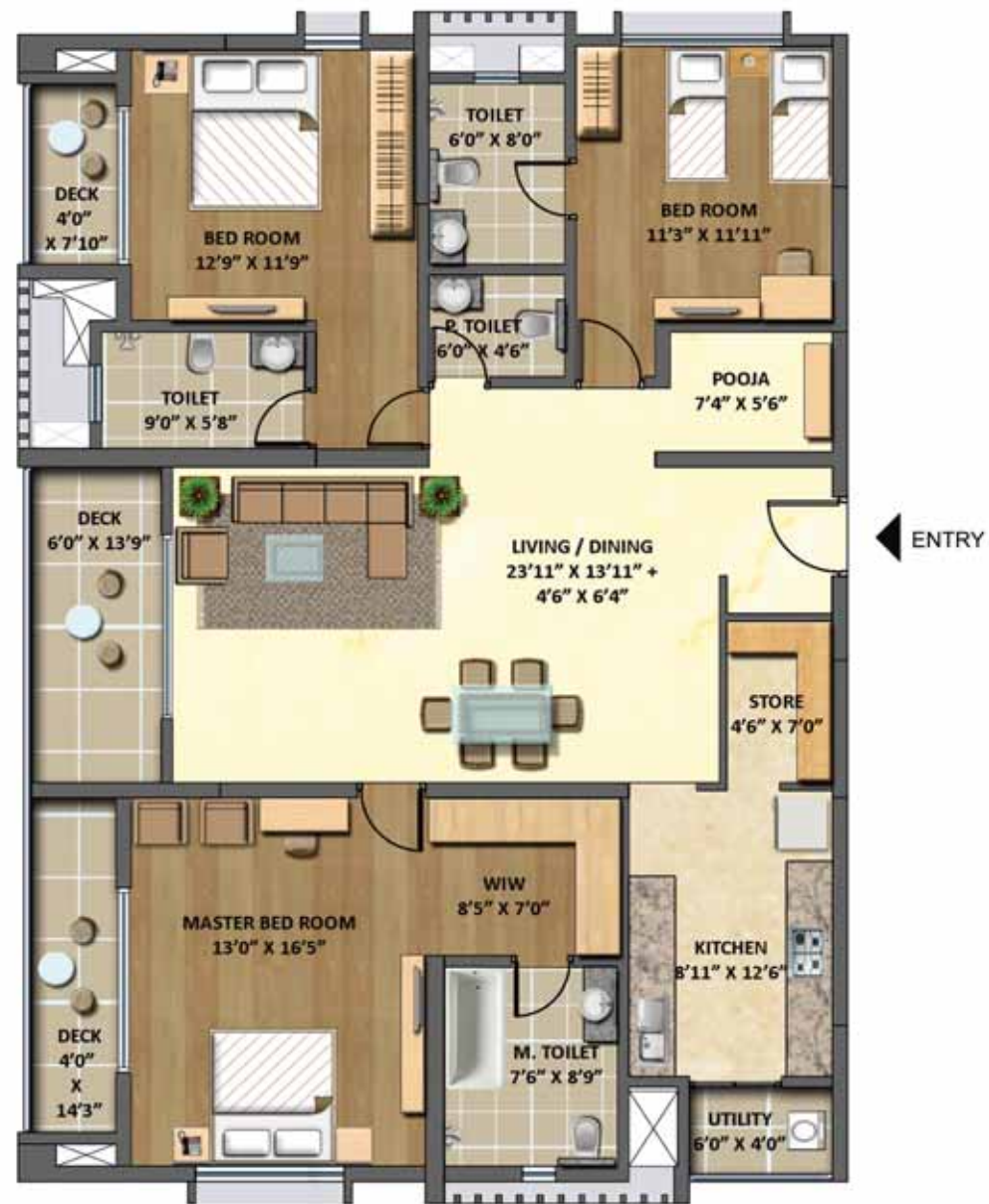
- Contemporary facade
- Quake resistant structure
- Double height entrance lobby

## ENVIRONMENT PROTECTION & SAFETY

- Provision of rainwater harvesting
- Sewage treatment plan
- Water recycling facility
- Fire sprinkler system (in common areas)
- CCTV monitoring (in common areas)
- D. G. power backup



Actual render of the façade.



MAJESTO 3 BHK LUXE - 1

Disclaimer : Tolerance of +/-2% is possible in the unit areas on account of Design and Construction variances



MAJESTO 3 BHK LUXE - 2

Disclaimer : Tolerance of +/-2% is possible in the unit areas on account of Design and Construction variances







MAJESTO 3 BHK LUXE - 3

Disclaimer : Tolerance of +/-2% is possible in the unit areas on account of Design and Construction variances



MAJESTO 3 BHK LUXE - 4

Disclaimer : Tolerance of +/-2% is possible in the unit areas on account of Design and Construction variances

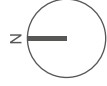




2 BHK (TYPE I)



2 BHK (TYPE II)



Disclaimer : Tolerance of +/-2% is possible in the unit areas on account of Design and Construction variances



2 BHK LUXE (TYPE I)

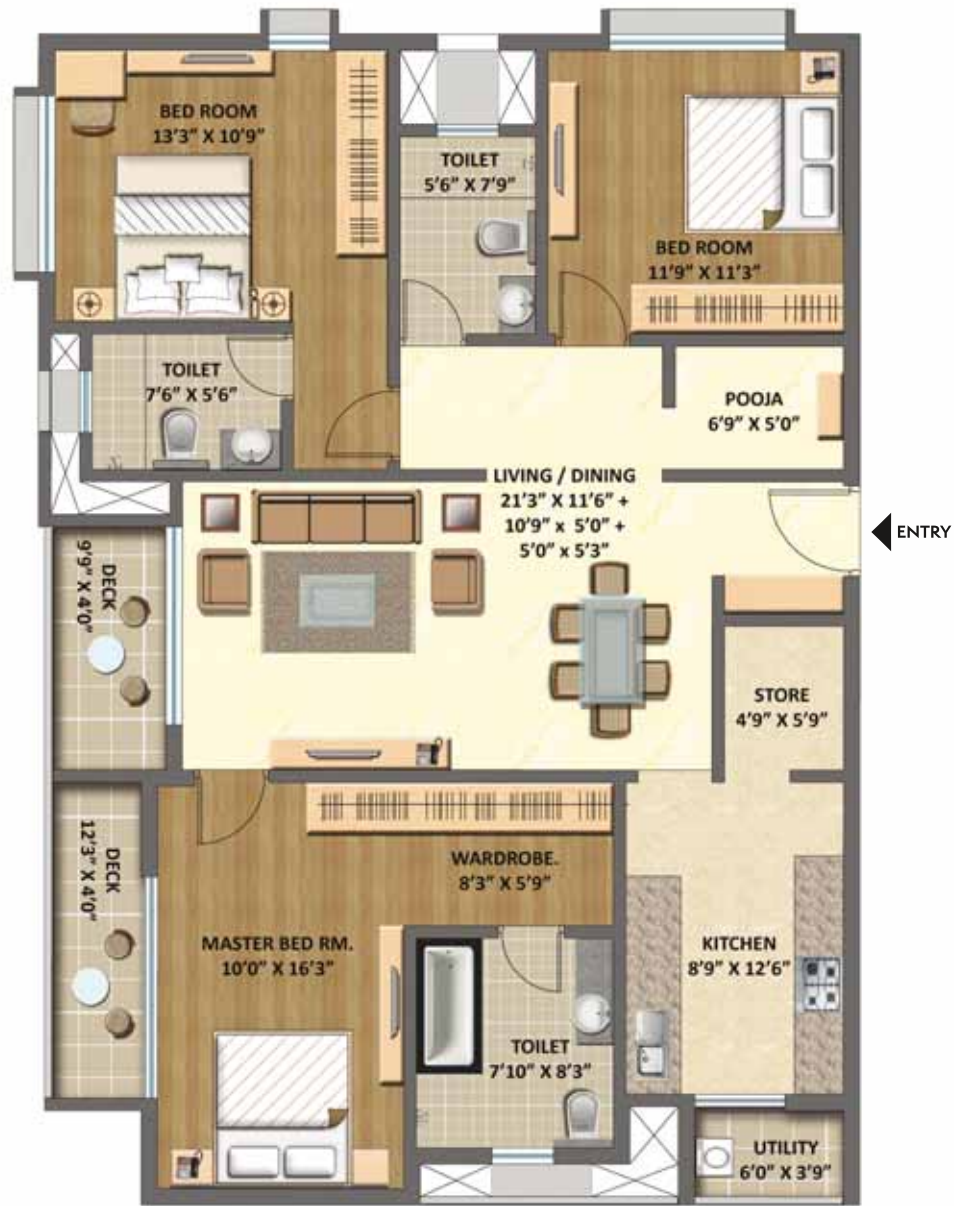


2 BHK LUXE (TYPE II)



Disclaimer : Tolerance of +/-2% is possible in the unit areas on account of Design and Construction variances



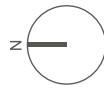


Disclaimer : Tolerance of +/-2% is possible in the unit areas on account of Design and Construction variances



3 BHK (TYPE II)

3 BHK (TYPE III)



Disclaimer : Tolerance of +/-2% is possible in the unit areas on account of Design and Construction variances



3 BHK LUXE (TYPE I)

Disclaimer : Tolerance of +/-2% is possible in the unit areas on account of Design and Construction variances



3 BHK LUXE (TYPE II)

Disclaimer : Tolerance of +/-2% is possible in the unit areas on account of Design and Construction variances





# THE DEVELOPERS

## About The Lodha Group

Established in 1980, privately held Lodha Group is India's No 1 real estate developer and amongst the world's select multinational real estate developers with presence in India and the United Kingdom. The company had net sales exceeding INR 8,700 crores in FY 12-13. The Group is currently developing over 35 million sq.ft. of prime real estate, with over 20 projects in London, Mumbai, Pune & Hyderabad. The company is one of the largest employers in Mumbai with over 3,500 direct associates and over 25,000 workmen at its sites.

The Lodha Group has several landmark developments to its credit including World One - the world's tallest residential tower and Palava City – the largest private development in the world. The group has brought some of the top global names including Armani/Casa, Trump, Philip Starck, Jade Jagger, Greg Norman and Pei Cobb Freed to India. The Group has recorded the biggest land deal in India till date, buying a plot for Rs. 4,053 crore from the Mumbai Metropolitan Region Development Authority (MMRDA) in 2010, where it is developing New Cuffe Parade, a world-class mixed use development set to become the new city centre of Mumbai. In the last 12 months, the group has acquired two other notable land parcels in Mumbai - the 17 acres Mumbai Textile Mills parcel for ~Rs. 2,727 cr. from DLF and the famous Washington House property on Altamount Road from the American government.

Most recently, in November 2013, the Group has gone international and acquired the landmark MacDonald House at 1 Grosvenor Square in Prime Central London from the Canadian Government for a consideration of GBP 306 million (Rs. 3,100 crores). It was selected as the preferred bidder in the face of serious competition from sovereign wealth funds and leading developers from across the globe. With this acquisition, the Group has set up business in the UK with a planned investment of GBP 3 billion (>Rs. 30,000 crores) over the next 5 years and enthused India by its move towards creating an Indian multinational. With offices in London, Dubai and Shanghai and planned openings in the USA and Singapore, the Group is marching on with creating a true international experience.

Pioneering new trends in the market, the Group introduced CASA by Lodha, offering the mid-income consumer luxury homes within easy reach. The Group also introduced the concept of branded office spaces, with offerings at every level, from world-class corporate offices to large-scale office campuses to signature boutique offices for growing businesses. The Group's tremendous success has been marked by financial investments from the finest global investors, including JP Morgan, Deutsche Bank, HDFC Ventures and ICICI Ventures. Going beyond its role as a premier real estate developer, the Lodha Group has been a socially responsible corporate, focusing on education as the best medium to enrich society.

## Other Accomplishments

- The most trusted real estate brand in the country, Brand Trust Report 2014
- Winner of CNBC Awaaz Real Estate Awards 'Most Upcoming Real Estate Brand' 2013
- Lodha Belleza, Hyderabad recognized as the best 'Ultra Luxury Segment – 50% Complete Residential' project by CNBC Awaaz Real Estate Awards 2013
- Lodha Bellezza, Hyderabad for 'Best high-rise architecture'
- Winner of Emerging Business of the Year - HELLO! Magazine 'Hall of Fame' 2013 Awards
- Mumbai's most preferred Real Estate Brand – Morgan Stanley Report, 2012
- Winner of Green Good Design Award 2012 for World One
- Good Practice UN Habitat Business Award for Integrated Planning, for Casa Bella, an integrated township at Palava.
- Best Developer involved in High-end Residential Properties across India, by constructionsourceindia.com
- Leaders of Indian Infrastructure & Construction Award by Economic Times ACETECH.
- Winner of Indian Digital Media Awards 2013
- Lodha Belmondo, Silver Award for 'Best Product / Services (website)'
- New Cuffe Parade, Bronze Award for 'Best Integrated Media Campaign - Corporate' (Daddy Diaries campaign)
- Winner of International Property Awards, 2012 in association with Bloomberg
- Lodha Fiorenza, Mumbai for 'Best high-rise development'
- Lodha Golflinks, Palava for 'Best residential golf development'

## Recent Completed Projects (Lodha Residential, Casa Residential, Lodha Office Spaces)

Lodha Costiera, Nepean Sea Road | Lodha's Château Paradis, WorliSeaface | Lodha Aria, East Parel | Lodha Grandeur, Prabhadevi | Lodha Bellissimo, Mahalaxmi | Lodha Palazzo, JVPD Scheme, Juhu | Lodha One, JVPD Scheme, Juhu | Lodha Aurum, Kanjurmarg | Lodha Imperia, Bhandup | Lodha Paradise, Thane | Lodha Aristo, Thane | Lodha Goldcrest, Lonavala | Casa Ultima, Thane | Casa Essenza, Dahisar | Casa Bella, Palava |Lodha Excelus, Mahalaxmi | Lodha Supremus, Worli | iTHINK by Lodha, Kanjurmarg | iTHINK by Lodha, Thane | Boulevard Shopping, Thane

## Ongoing Projects: Office Spaces

Lodha Supremus, Upper Worli | Lodha Supremus, Kanjurmarg | Lodha Supremus, Thane

## Ongoing Projects: Residences

Lodha Primero, Mahalaxmi | World One, Upper Worli | World Crest, Upper Worli | Lodha Venezia, Parel | Lodha Elisium, New Cuffe Parade | Lodha Dioro, New Cuffe Parade | Lodha Evoq, New Cuffe Parade | The Park, Worli | Lodha Fiorenza, Goregaon | Lodha AurumGrandé, Kanjurmarg | Lodha Luxuria, Thane | Lodha Aqua, Dahisar | Lodha Golflinks, Palava | Lodha Belmondo, Pune | Lodha Bellezza, Hyderabad | Lodha Meridian, Hyderabad | Casa Royale, Thane Casa Bella Gold, Palava | Casa Rio, Palava | Casa Rio Gold, Palava | Casa Paradiso, Hyderabad

## Upcoming Projects

Residences at Altamount Road, Walkeshwar, Prabhadevi, Andheri and Thane | Bungalows at Palava and Pune  
All details valid as on the date of printing (04.01.2014)

## Commitment To Our Communities

Lodha is a committed and responsible corporate citizen of our society and makes significant efforts for the improvement and upliftment of the areas and communities that it works in. Over 2% of our annual profits are dedicated to social programs.

Lodha Foundation: The foundation focuses on ensuring that every family is made self-sufficient by ensuring that at least one member of the family is employable. In order to achieve this goal, the foundation has a special focus on education and vocational training.

## Education

Chandresh Lodha Memorial School – Over 5,000 students from low income families receive high quality, subsidized education through the two branches of the Chandresh Lodha Memorial School in Dombivali and Nalasopara. Highest quality education is provided at fee of less than Rs. 500 per month, ensuring that every child is able to access a brighter future without regard for the current financial ability of his/her family.

Lodha Foundation Scholarships – Each year, the Foundation offers scholarships to over 1,000 students from economically disadvantaged backgrounds. The scholarships provide upto 75% of the school fees and other education related costs for students who exhibit good academic performance.

Lodha Foundation International Study Scholarships – Awarded to 3 students of outstanding academic merit and financial need each year to enable them to pursue higher education outside India, with a goal of getting them to come back and contribute to Indian society.

## Vocational Training

The Foundation conducts vocational training in a variety of fields like computer programming, vehicle repair, mobile repair, mehendi application etc. Over 2,000 people take advantage of these courses each year, giving them life skills to ensure long-term employment.