



# RBA

RAJ BAY VISTA



# A TRUSTED LEGACY

---

An oasis nestled in the lap of nature, yet discreetly tucked away in nature's gentle embrace, Raj Bay Vista is enveloped by a sprawling, cerulean lake, where migratory birds alight to rest and replenish, painting the skies with their graceful flights. The air is imbued with the intoxicating scent of fresh blooms and the music of songbirds, evoking a sense of tranquility and wonder.

SNN RAJ Corp brings to you a peerless fusion of nature and modernity, offering an idyllic lifestyle that transcends the ordinary. With its ethereal location, untainted terrain, and unrivaled amenities, it is truly a hidden gem, awaiting your discovery.

# RAJ BAY VISTA - TOWER A & B

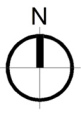




# RAJ BAY VISTA - TOWER A



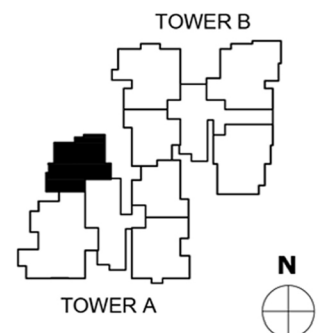
Floor Plans



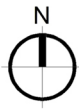
**RAJ BAY VISTA - TOWER A A11 - A151**

**TYPE - 2 BHK 2 - TOI**

CARPET AREA: 785.56 SQ.FT  
BALCONY AREA: 119.48 SQ.FT  
SUPER BUILTUP AREA: 1320 SQ.FT



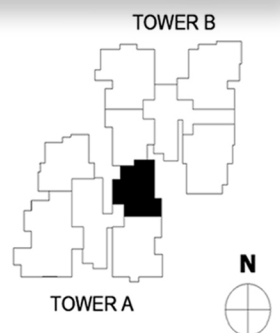




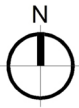
**RAJ BAY VISTA - TOWER A A12 - A152**

**TYPE - 2 BHK 2 - TOI**

CARPET AREA: 787.28 SQ.FT  
BALCONY AREA: 54.90 SQ.FT  
SUPER BUILTUP AREA: 1235 SQ.FT

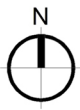




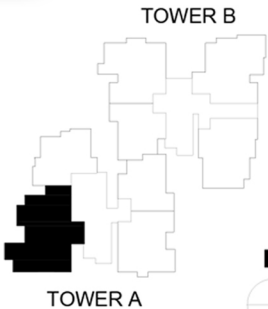


**RAJ BAY VISTA - TOWER A A13 - A153**  
**TYPE - 3 BHK 2 - TOI**  
CARPET AREA: 982.75 SQ.FT  
BALCONY AREA: 59.74 SQ.FT  
SUPER BUILTUP AREA: 1530 SQ.FT



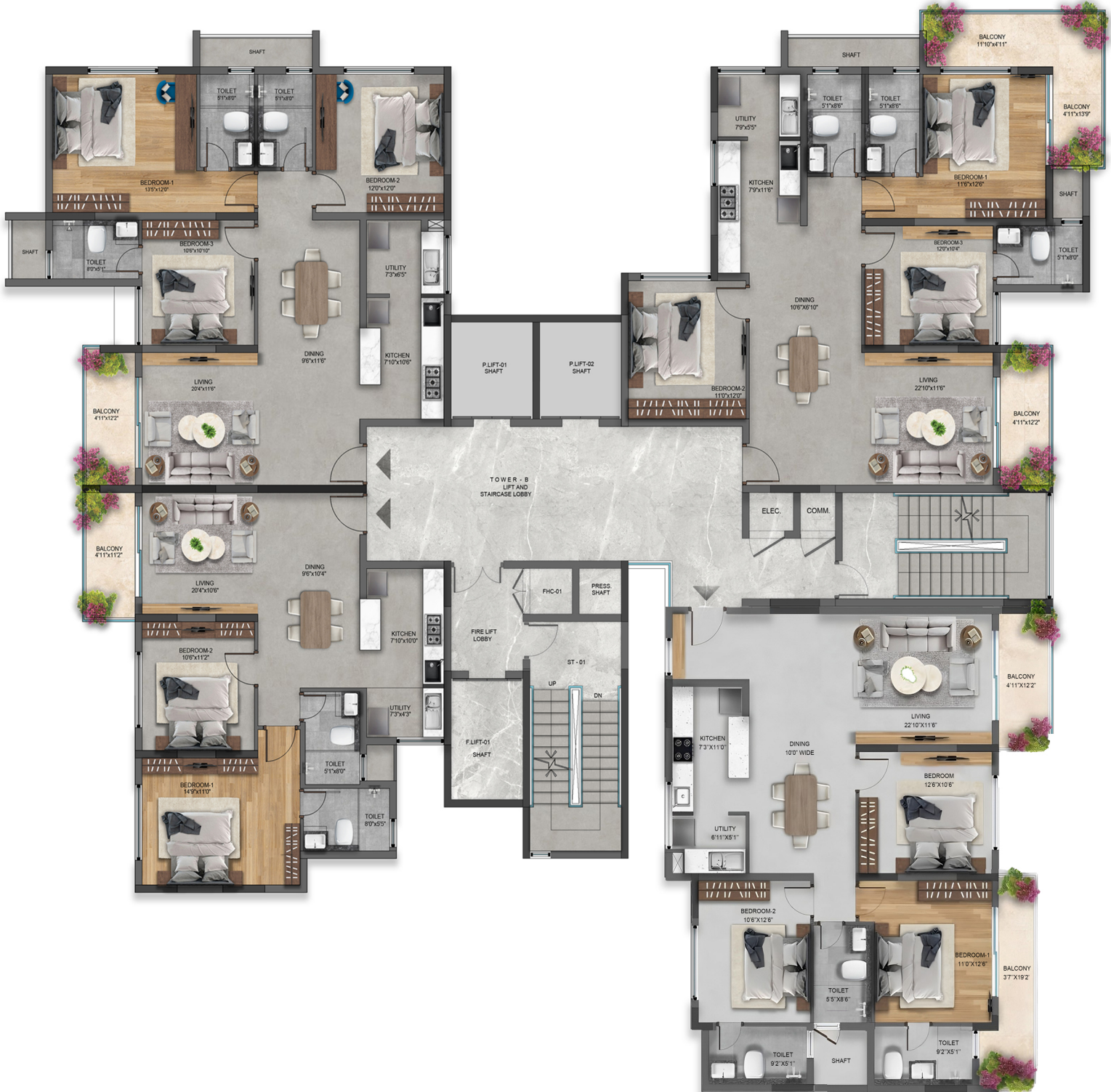


**RAJ BAY VISTA - TOWER A    A14 - A154**  
**TYPE - 4 BHK    3 - TOI**  
CARPET AREA: 1494.58 SQ.FT  
BALCONY AREA: 106.56 SQ.FT  
SUPER BUILTUP AREA: 2330 SQ.FT

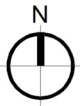




**RAJ BAY VISTA - TOWER B**



Floor Plans



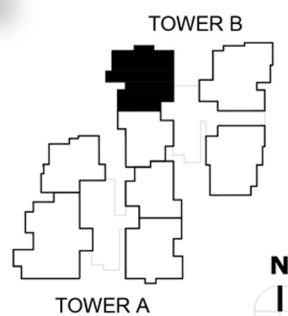
**RAJ BAY VISTA - TOWER B B11 - B151**

**TYPE - 3BHK 3 - TOI**

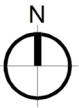
CARPET AREA: 1105.25 SQ.FT

BALCONY AREA: 56.51 SQ.FT

SUPER BUILTUP AREA: 1690 SQ.FT







**RAJ BAY VISTA - TOWER B B12 - B152**

**TYPE - 3BHK 3 - TOI**

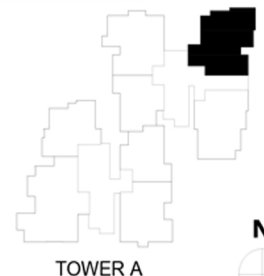
CARPET AREA: 1107.08 SQ.FT

BALCONY AREA: 187.29 SQ.FT

SUPER BUILTUP AREA: 1890 SQ.FT



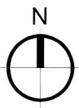
TOWER B



TOWER A

N





**RAJ BAY VISTA - TOWER B B13 - B153**

**TYPE - 3BHK 3 - TOI**

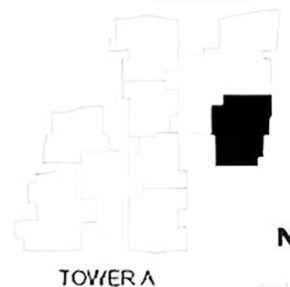
CARPET AREA: 1143.13 SQ.FT

BALCONY AREA: 137.56 SQ.FT

SUPER BUILTUP AREA: 1870 SQ.FT

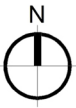


TOWER B



TOWER A

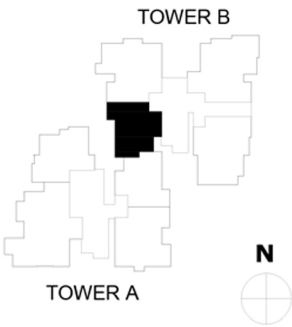




**RAJ BAY VISTA - TOWER B B14 - B154**

**TYPE - 2BHK 2 - TOI**

CARPET AREA: 804.29 SQ.FT  
BALCONY AREA: 54.90 SQ.FT  
SUPER BUILTUP AREA: 1260 SQ.FT



# Specifications

## STRUCTURE:

- Seismic-II zone compliant RCC Framed structure / solid block masonry.
- Internal cement plaster for block masonry.

## PAINTING:

- Internal walls & ceiling with acrylic emulsion paint with roller finish.
- External walls with exterior grade emulsion paint.

## DOORS AND WINDOWS:

- Main Door: Seasoned/Engineered door frames with Granite Threshold for main door with laminate dressed engineered flush shutters. Main door with door eye viewer and Biometric door lock.
- Bedroom & Toilet doors: Engineered door frames with laminated flush shutters. Bedroom doors with cylindrical locks and SS hinges. SS coated aluminum tower bolts.
- Balcony Doors: Powder coated aluminum / UPVC sliding / openable door.
- Windows: Heavy duty powder coated aluminum/UPVC Modular windows with mosquito mesh shutter. As per floor plan window sizes or configuration may change for the same, In case of casement window no mosquito mesh shutter.

## KITCHEN AND UTILITY:

- Single bowl sink and floor mounted sink mixer will be handed over to the customers.
- Ceramic glazed tile dadoing in Utility walls up to 4' height.
- Provision for aqua guard, instant geyser.
- Provision for hob and chimney in Kitchen.
- Provision for washing machine in utility area.
- SS sink with drain board & sink cock in Utility for all apartments will be handed over to the customers.

## TOILET FITTING AND ACCESSORIES:

- Ceramic glazed tile dadoing for wall up to false ceiling.
- White sanitary ware of Kohler/Roca/Duravit/ Toto or equivalent make in the toilets. Wall mounted commodes.
- Counter type/wall mounted wash basin with basin mixer in all the bathrooms.
- Hot and cold mixer of Jaguar/Kohler/Roca/ Grohe or equivalent make in all toilets.
- Rain Shower in one toilet.
- Health faucet provided for all the toilets.
- Provision for geyser and exhaust fans in all toilets.
- False ceiling in Toilets.

## PLUMBING:

- All Internal Concealed Plumbing lines will be pressure tested.
- All water supply lines are made of CPVC/UPVC of reputed make. All Sanitary lines are PVC of SWR grade.

## ELECTRICAL:

- TV point in living and Two bedrooms in all apartments.
- AC Provisions in living and Bedrooms.
- Telephone points in living and one Bedroom for all apartments.
- Fire retardant electric wires of Havells/Lap/RR Kabel/ KEI or equivalent make.
- Modular electrical switches of reputed Brand.
- Intercom facility from security to the apartments.
- Video door phone in each apartment.
- Motion Sensor light in one toilet.
- 100% DG back up for lifts, pumps & common area lighting.

## FLOORING:

- Large format Vitrified flooring & Skirting for Living & Dining, Vitrified flooring in Kitchen, Bedrooms. Wood finish tiles in one bedroom.
- Superior quality matt finish ceramic tile flooring for balconies and utility. Superior quality matt finish ceramic tiles for toilet flooring.

# SPECIFICATIONS FOR RAJ BAY VISTA

## POWER ALLOCATION:

SI NO	PARTICULARS	BESCOM SUPPLY	DG BACK UP
1	2 BHK - 2T	4.0 KW	1.5 KVA
2	3 BHK - 2T	5.0 KW	2.0 KVA
3	3 BHK - 3T	5.0 KW	2.0 KVA
4	4 BHK - 3T	6.0 KW	3.0 KVA

- 100% DG back up for lifts, pumps & common area lighting.

# A P E E R L E S S O F F E R I N G

---

The project boasts a plethora of state-of-the-art amenities and facilities, elevating the concept of modern living to new heights. From sparkling swimming pools and fully-equipped gyms to chic cafes and gourmet restaurants, every desire and indulgence is just a stone's throw away.

Whether you're seeking a moment of respite or eager to forge lasting memories with loved ones, this project is a sanctuary of serenity and inspiration.



Corporate Office:

4/A, 2nd floor, Elephant Rock Road, Jayanagar 3rd  
Block, Bengaluru, Karnataka 560011

08095 58 58 58

[enquiry@snrajcorp.com](mailto:enquiry@snrajcorp.com)

• • •