

GODREJ EMERALD WATERS

PIMPRI, PUNE



The project Godrej Emerald Waters is registered with MahaRERA Registration No P52100051200 available at website:<http://maharera.mahaonline.gov.in>.

MASTER LAYOUT PLAN



Legend

- | | | | |
|----------------------------|-----------------------|-----------------------------|----------------------------|
| 1. Entry/Exit | 10. Landscaped Greens | 18. Podium Entry | 26. Multipurpose Lawn |
| 2. BRT Parking Reservation | 11. Fruit Orchard | 19. Activity Lawn | 27. Kids' Play Area |
| 3. Loading/Unloading Area | 12. Sit-out | 20. Entry to Club House | 28. Senior Citizen Seating |
| 4. Shop Front Plaza | 13. Flower Garden | 21. Tiered Seating | 29. Outdoor Gym |
| 5. Driveway | 14. Mist Garden | 22. Party Lawn | 30. Pathway |
| 6. Drop-off | 15. Flower Tunnel | 23. Meditation Area | 31. Work from Garden |
| 7. Barbeque Area | 16. Bonfire Area | 24. Multipurpose Play-court | 32. Landscape Walkway |
| 8. Camping Decks | 17. Cycling Track | 25. Sit-out Space | 33. Net Cricket |
| 9. Herb Garden | | | |

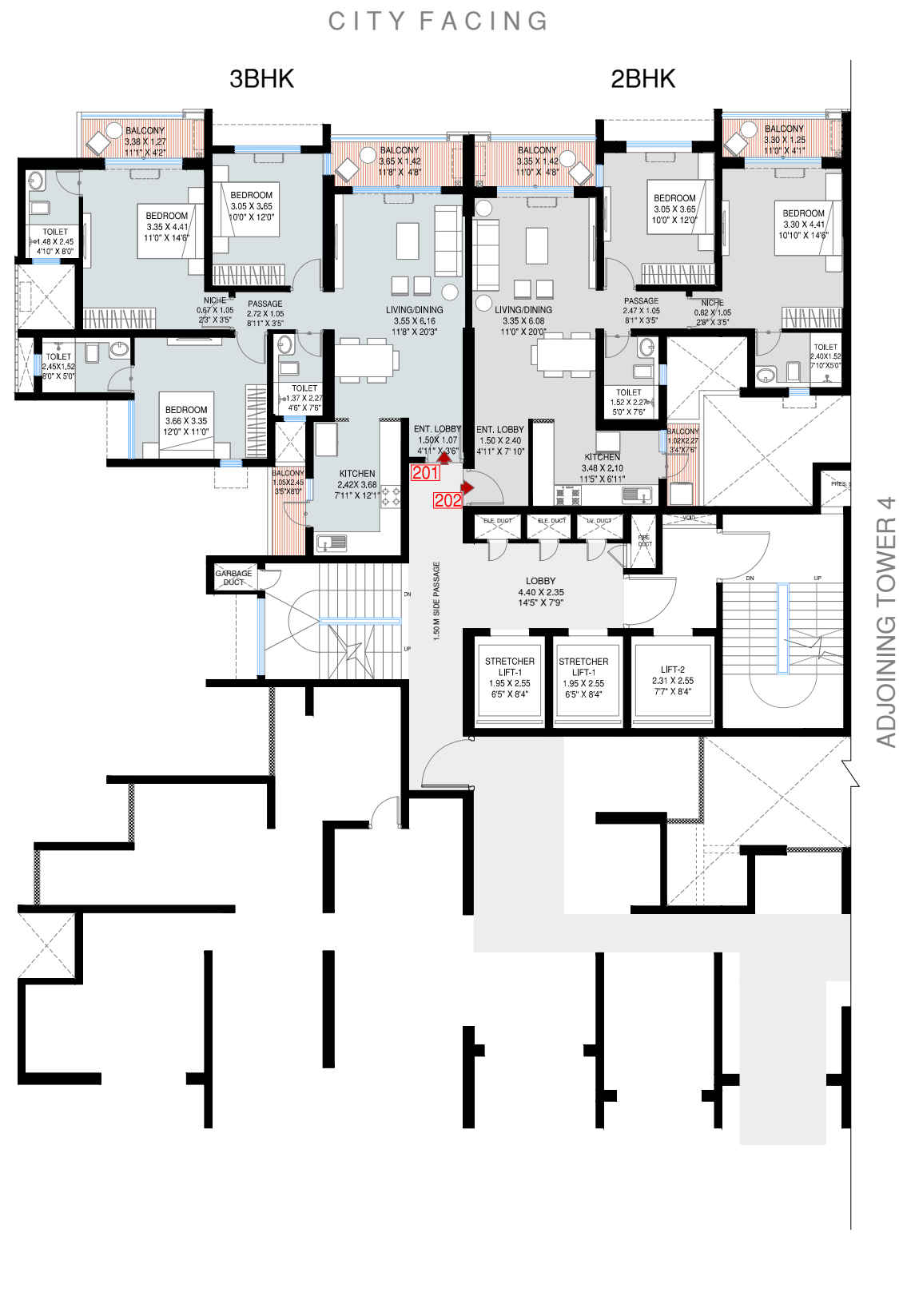
Amenities in Aqua Club

- | | |
|--|-----------------------------------|
| 38. Reading Area | 44. Mini Theatre |
| 39. Two Indoor Badminton Courts | 45. Business Centre |
| 40. Community Hall | 46. Hobby Deck |
| 41. Space for Café with Outdoor Seating Area | 47. Swimming Pool |
| 42. Indoor Games Room with Digital Gaming Area & Kids' Play Area | 48. Kids' Pool |
| 43. Crèche Area | 49. Aqua Treadmill |
| | 50. Resistance Pool |
| | 51. Jacuzzi |
| | 52. Poolside Café and Lounge Area |

Amenities in Wellness Club

- | |
|-------------------------------------|
| 53. Area for Spa & Salon with Steam |
| 54. Gymnasium |
| 55. Guest Rooms |

TOWER 3 FLOOR PLAN

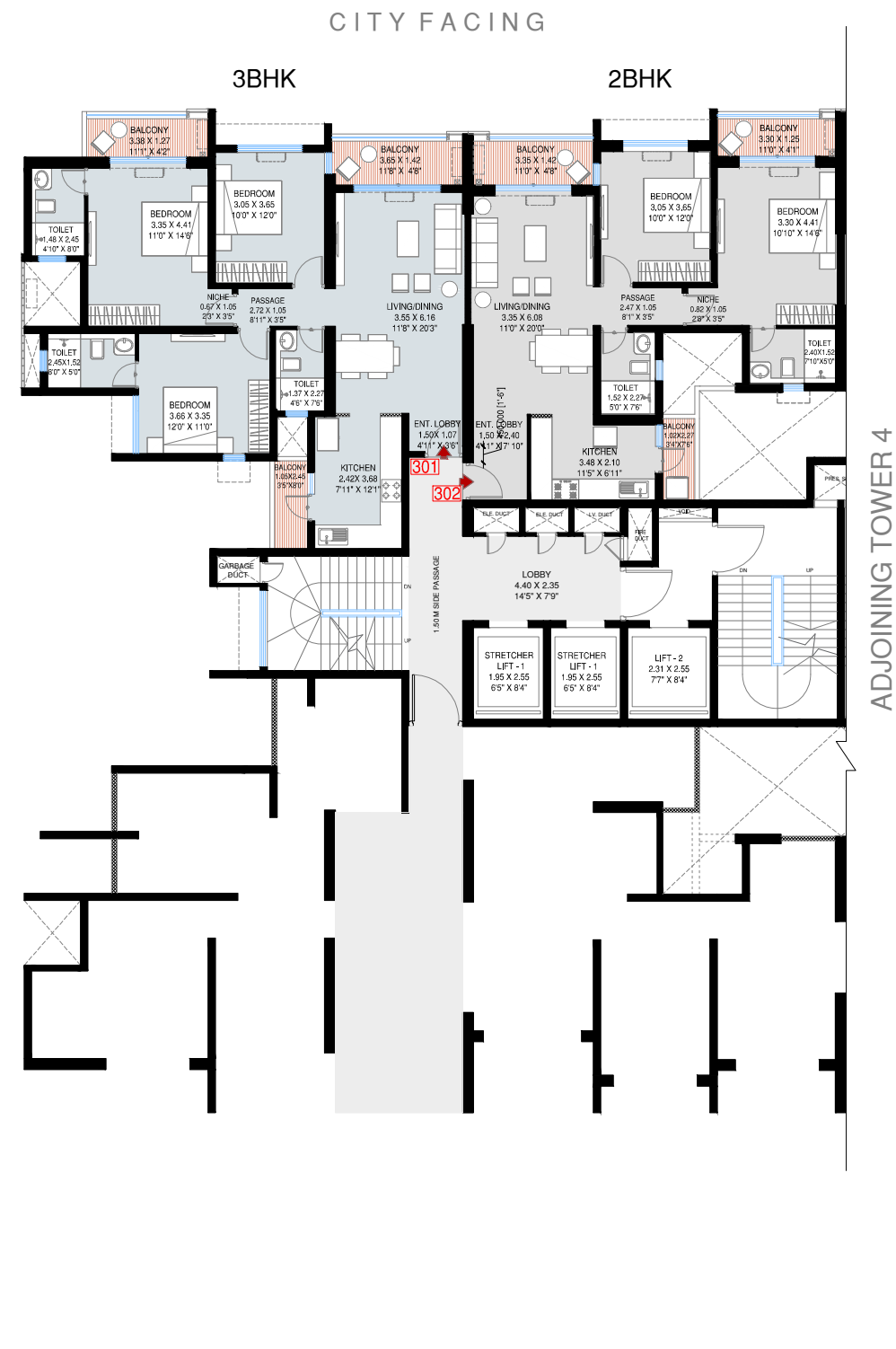


AREA AS PER RERA SECOND FLOOR					
FLAT NO	RERA CARPET AREA (SQ M)	EXCLUSIVE AREA (SQ M)	TOTAL AREA (SQ M)	TOTAL AREA (SQ FT)	FACING
201 (3 BHK)	92.71	10.33	103.04	1109.12	CITY FACING
202 (2 BHK)	75.04	9.60	84.64	911.06	CITY FACING

BUILDING : TOWER 3
UNIT TYPE : 3 BHK, 2 BHK
UNIT NO : 201,202
FLOOR NO : SECOND FLOOR PLAN

- NOTES:
- All dimensions are measured from unfinished internal wall surface
 - The furniture accessories, painting, item,electronics goods additional fitting/ fixture. decorative item, false ceiling including finishing materials, specification,shades, sizes and colour of tiles etc. shown in the image are only indicative in nature and are only for the purpose of illustrating indicating a possible layout & do not form part of the standard specification.
 - Depth of balconies is measured from the outer edge.
 - Drawing not to scale.
 - All dimensions are in meter
 - 1 sq.m = 10.764 sq.ft
 - 1 m = 3.28 ft



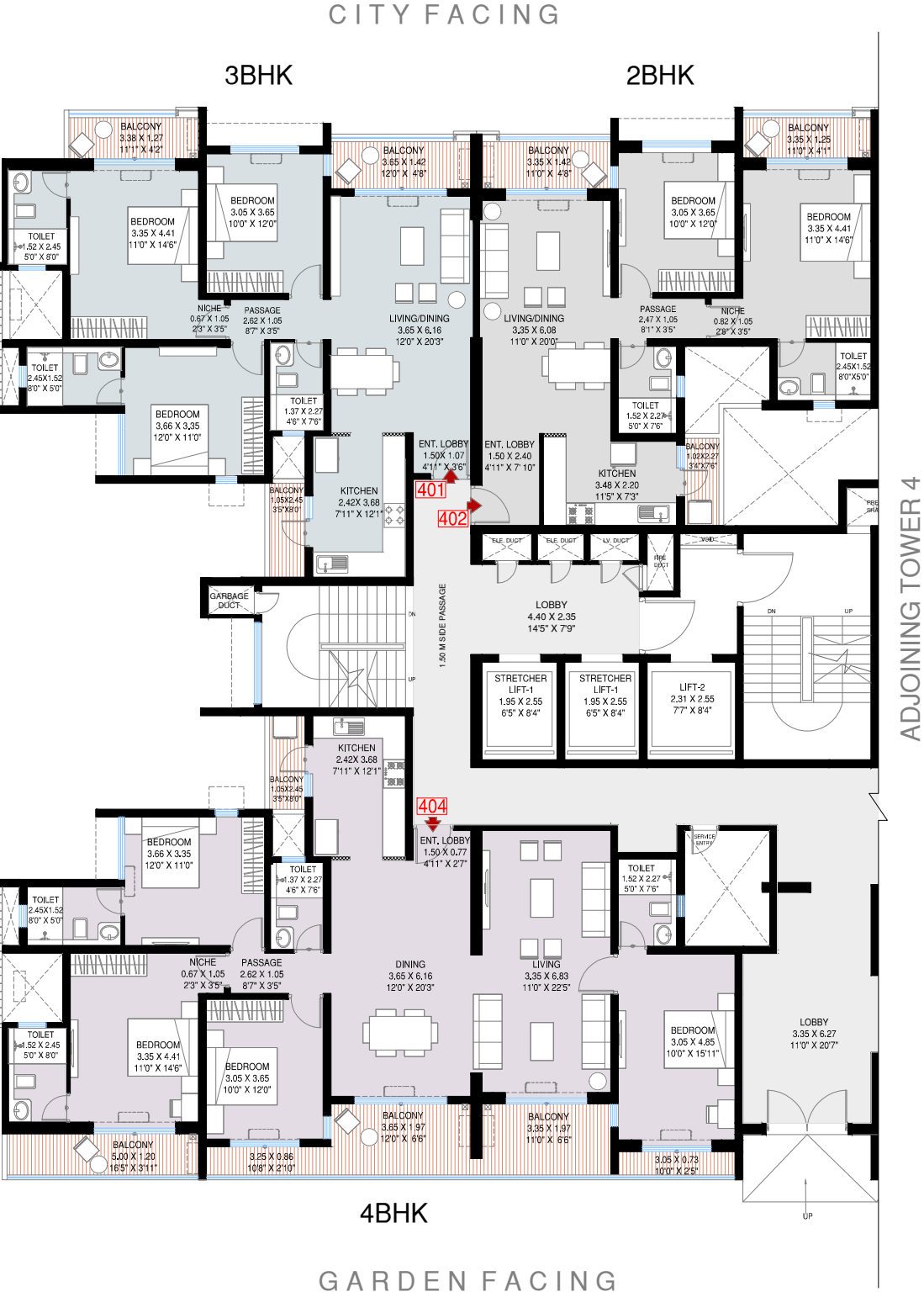


AREA AS PER RERA THIRD FLOOR					
FLAT NO	RERA CARPET AREA (SQ M)	EXCLUSIVE AREA (SQ M)	TOTAL AREA (SQ M)	TOTAL AREA (SQ FT)	FACING
301 (3 BHK)	92.71	10.33	103.04	1109.12	CITY FACING
302 (2 BHK)	75.04	9.60	84.64	911.06	CITY FACING

BUILDING : TOWER 3
UNIT TYPE : 3 BHK, 2 BHK
UNIT NO : 301,302
FLOOR NO : THIRD FLOOR PLAN

- NOTES:**
- All dimensions are measured from unfinished internal wall surface
 - The furniture accessories, painting, item,electronics goods additional fitting/ fixture. decorative item, false ceiling including finishing materials, specification,shades, sizes and colour of tiles etc. shown in the image are only indicative in nature and are only for the purpose of illustrating indicating a possible layout & do not form part of the standard specification.
 - Depth of balconies is measured from the outer edge.
 - Drawing not to scale.
 - All dimensions are in meter
 - 1 sq.m = 10.764 sq.ft
 - 1 m = 3.28 ft



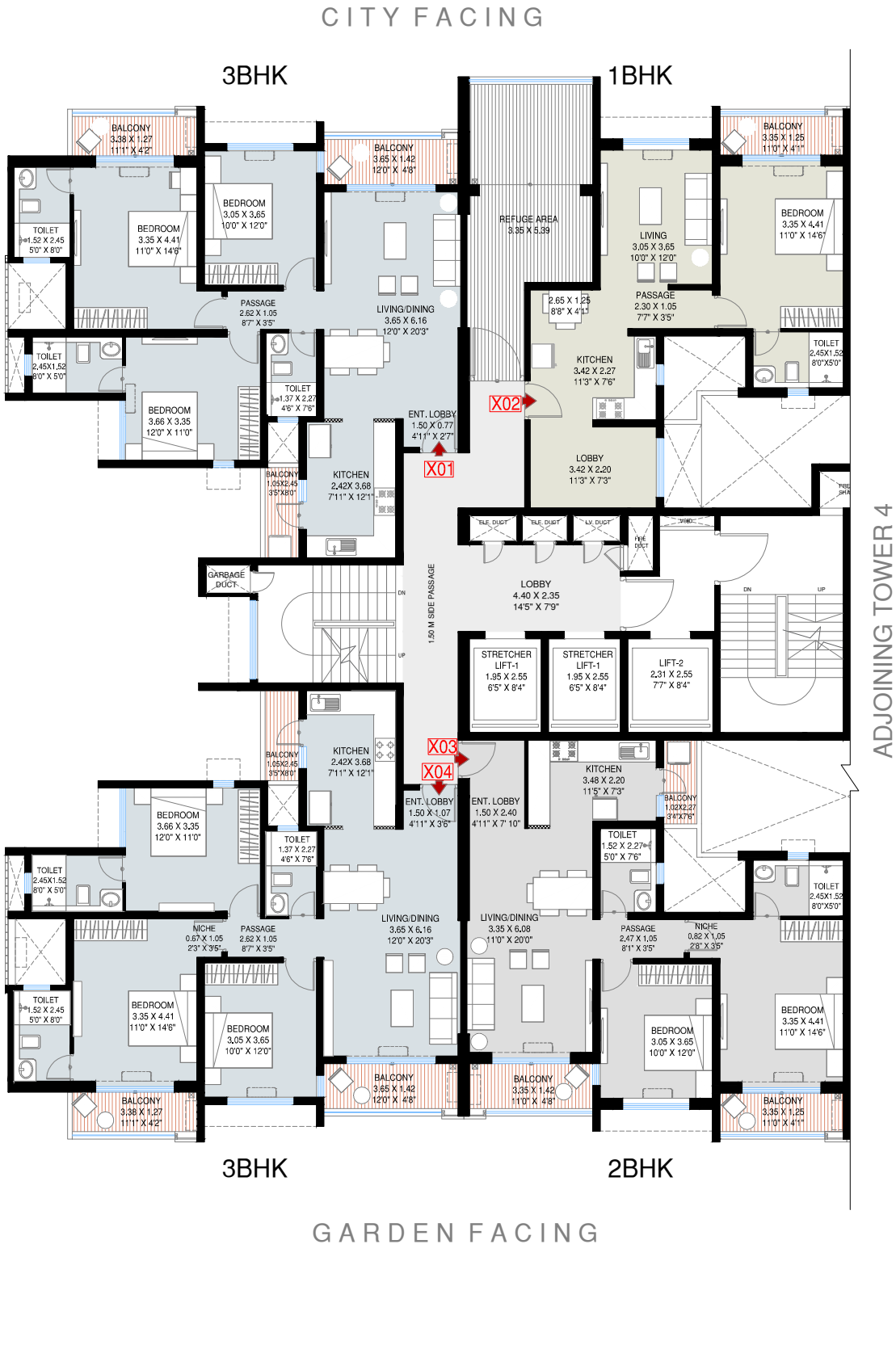


AREA AS PER RERA FOURTH FLOOR					
FLAT NO	RERA CARPET AREA (SQ M)	EXCLUSIVE AREA (SQ M)	TOTAL AREA (SQ M)	TOTAL AREA (SQ FT)	FACING
401 (3 BHK)	92.78	10.36	103.14	1110.20	CITY FACING
402 (2 BHK)	75.27	9.65	84.92	914.08	CITY FACING
-	-	-	-	-	-
404 (4 BHK)	140.28	25.65	165.93	1786.07	GARDEN FACING

BUILDING : TOWER 3
UNIT TYPE : 4 BHK, 3 BHK, 2 BHK
UNIT NO : 401,402,404
FLOOR NO : FOURTH FLOOR PLAN

- NOTES:
- All dimensions are measured from unfinished internal wall surface
 - The furniture accessories, painting, item,electronics goods additional fitting/ fixture. decorative item, false ceiling including finishing materials, specification,shades, sizes and colour of tiles etc. shown in the image are only indicative in nature and are only for the purpose of illustrating indicating a possible layout & do not form part of the standard specification.
 - Depth of balconies is measured from the outer edge.
 - Drawing not to scale.
 - All dimensions are in meter
 - 1 sq.m = 10.764 sq.ft
 - 1 m = 3.28 ft



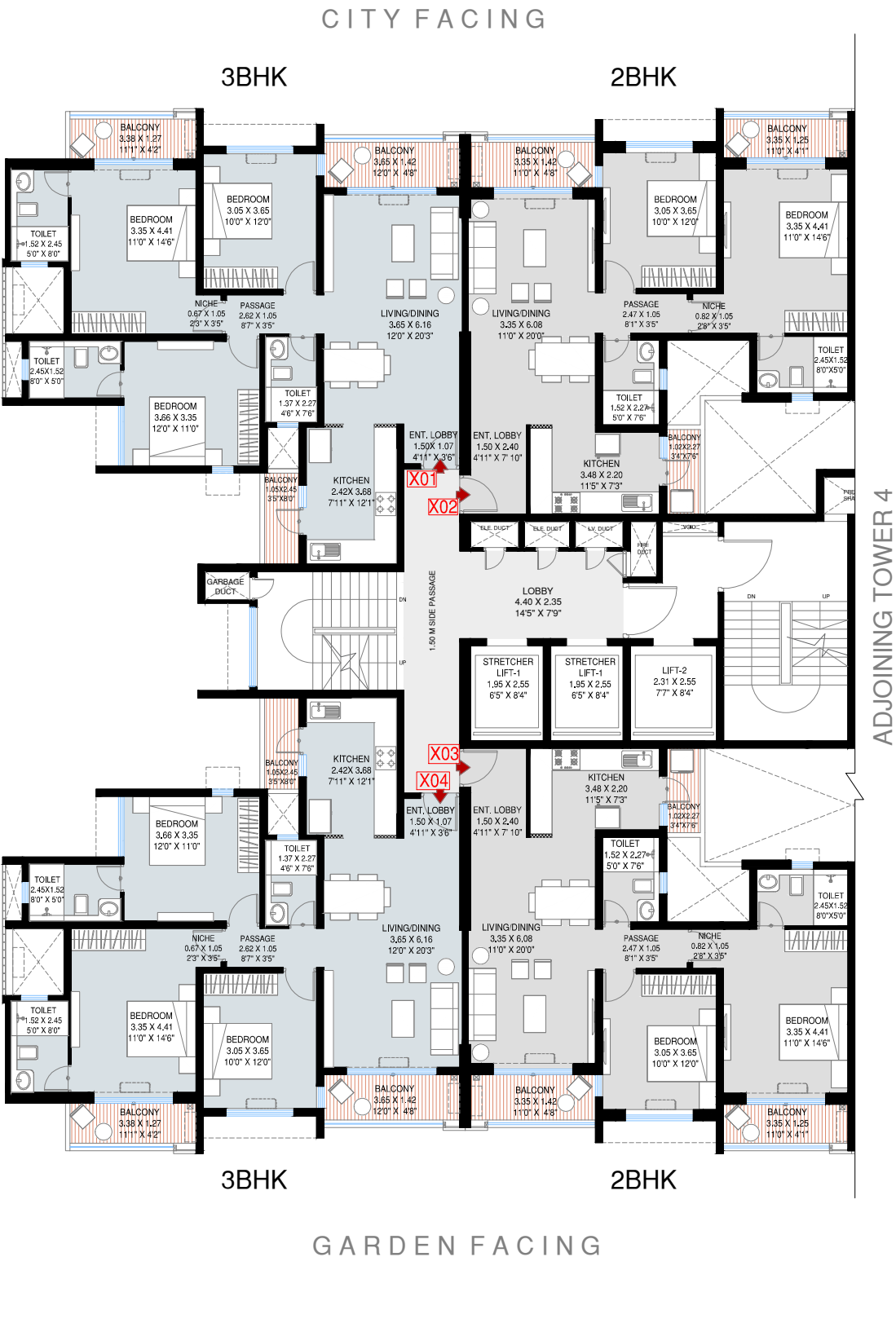


AREA AS PER RERA REFUGE FLOOR					
FLAT NO	RERA CARPET AREA (SQ M)	EXCLUSIVE AREA (SQ M)	TOTAL AREA (SQ M)	TOTAL AREA (SQ FT)	FACING
X01(3 BHK)	92.28	10.36	102.64	1104.82	CITY FACING
X02 (1 BHK)	54.34	3.51	57.85	622.70	CITY FACING
X03 (2 BHK)	75.27	9.65	84.92	914.08	GARDEN FACING
X04 (3 BHK)	92.78	10.36	103.14	1110.20	GARDEN FACING

BUILDING : TOWER 3
UNIT TYPE : 3 BHK, 2 BHK, 1 BHK
UNIT NO : X01,X02,X03,X04
FLOOR NO : REFUGE FLOOR PLAN
7th,12th,17th,22nd,27th,32nd

- NOTES:
- All dimensions are measured from unfinished internal wall surface
 - The furniture accessories, painting, item,electronics goods additional fitting/ fixture. decorative item, false ceiling including finishing materials, specification,shades, sizes and colour of tiles etc. shown in the image are only indicative in nature and are only for the purpose of illustrating indicating a possible layout & do not form part of the standard specification.
 - Depth of balconies is measured from the outer edge.
 - Drawing not to scale.
 - All dimensions are in meter
 - 1 sq.m = 10.764 sq.ft
 - 1 m = 3.28 ft





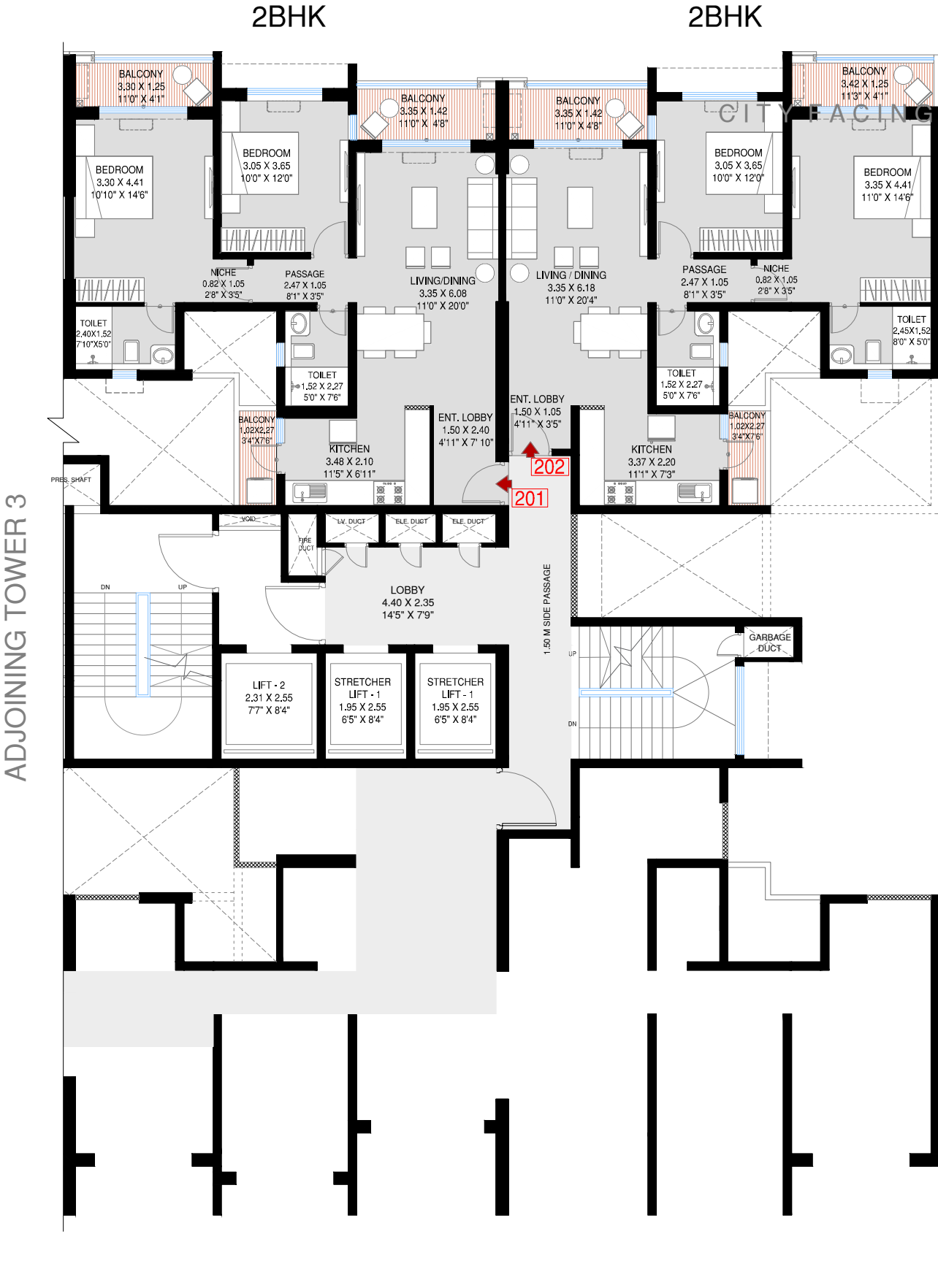
AREA AS PER RERA TYPICAL FLOOR					
FLAT NO	RERA CARPET AREA IN SQ. M.	EXCLUSIVE AREA IN SQ. M.	TOTAL AREA IN SQ. M.	TOTAL AREA IN SQ. FT.	FACING
X01 (3 BHK)	92.78	10.36	103.14	1110.20	CITY FACING
X02 (2 BHK)	75.27	9.65	84.92	914.08	CITY FACING
X03 (2 BHK)	75.27	9.65	84.92	914.08	GARDEN FACING
X04 (3 BHK)	92.78	10.36	103.14	1110.20	GARDEN FACING

BUILDING : TOWER 3
UNIT TYPE : 3 BHK, 2 BHK
UNIT NO : X01,X02,X03,X04
FLOOR NO : TYPICAL FLOOR PLAN
5th,6th,8th,9th,10th,11th,13th,14th,15th,16th,18th,19th,20th,
21st,23rd,24th,25th,26th,28th,29th,30th,31st

- NOTES:
- All dimensions are measured from unfinished internal wall surface
 - The furniture accessories, painting, item,electronics goods additional fitting/ fixture. decorative item, false ceiling including finishing materials, specification,shades, sizes and colour of tiles etc. shown in the image are only indicative in nature and are only for the purpose of illustrating indicating a possible layout & do not form part of the standard specification.
 - Depth of balconies is measured from the outer edge.
 - Drawing not to scale.
 - All dimensions are in meter
 - 1 sq.m = 10.764 sq.ft
 - 1 m = 3.28 ft



TOWER 4 FLOOR PLAN

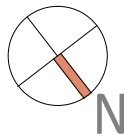


AREA AS PER RERA SECOND FLOOR					
FLAT NO	RERA CARPET AREA (SQ M)	EXCLUSIVE AREA (SQ M)	TOTAL AREA (SQ M)	TOTAL AREA (SQ FT)	FACING
201 (2 BHK)	75.04	9.60	84.64	911.06	CITY FACING
202 (2 BHK)	72.82	9.73	82.55	888.57	CITY FACING

BUILDING : TOWER 4
UNIT TYPE : 2 BHK
UNIT NO : 201, 202
FLOOR NO : SECOND FLOOR PLAN

- NOTES:**
- All dimensions are measured from unfinished internal wall surface
 - The furniture accessories, painting, item,electronics goods additional fitting/ fixture. decorative item, false ceiling including finishing materials, specification,shades, sizes and colour of tiles etc. shown in the image are only indicative in nature and are only for the purpose of illustrating indicating a possible layout & do not form part of the standard specification.
 - Depth of balconies is measured from the outer edge.
 - Drawing not to scale.
 - All dimensions are in meter
 - 1 sq.m = 10.764 sq.ft
 - 1 m = 3.28 ft





BUILDING : TOWER 4
UNIT TYPE : 2 BHK
UNIT NO : 301, 302
FLOOR NO : THIRD FLOOR PLAN

- All dimensions are measured from unfinished wall surface
- The furniture accessories, painting, item, electronics goods additional fitting/ fixture. decorative item, false ceiling including finishing materials, specification, shades, sizes and colour of tiles etc. shown in the image are only indicative in nature and are only for the purpose of illustrating indicating a possible layout & do not form part of the standard specification.
- Depth of balconies is measured from the outer edge.
- Drawing not to scale.
- All dimensions are in meter
- 1 sq.m = 10.764 sq.ft
- 1 m = 3.28 ft



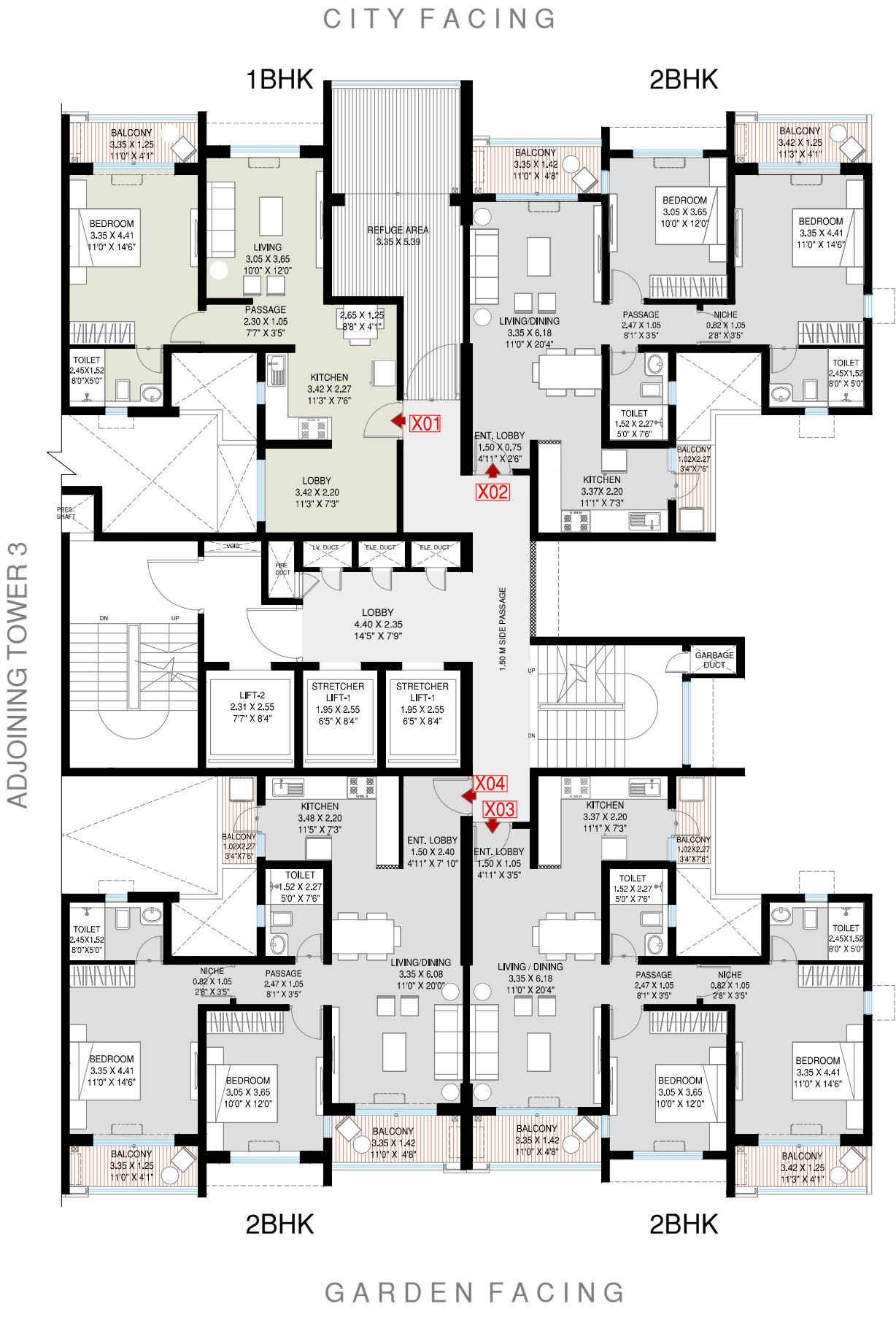


AREA AS PER RERA FOURTH FLOOR					
FLAT NO	RERA CARPET AREA (SQ M)	EXCLUSIVE AREA (SQ M)	TOTAL AREA (SQ M)	TOTAL AREA (SQ FT)	FACING
401 (2 BHK)	75.27	9.65	84.92	914.08	CITY FACING
402 (2 BHK)	72.82	9.73	82.55	888.57	CITY FACING
403 (3 BHK)	119.77	23.07	142.84	1537.53	GARDEN FACING
-	-	-	-	-	-

BUILDING : TOWER 4
UNIT TYPE : 3 BHK, 2 BHK
UNIT NO : 401, 402, 403
FLOOR NO : FOURTH FLOOR PLAN

- NOTES:
- All dimensions are measured from unfinished internal wall surface
 - The furniture accessories, painting, item,electronics goods additional fitting/ fixture. decorative item, false ceiling including finishing materials, specification,shades, sizes and colour of tiles etc. shown in the image are only indicative in nature and are only for the purpose of illustrating indicating a possible layout & do not form part of the standard specification.
 - Depth of balconies is measured from the outer edge.
 - Drawing not to scale.
 - All dimensions are in meter
 - 1 sq.m = 10.764 sq.ft
 - 1 m = 3.28 ft



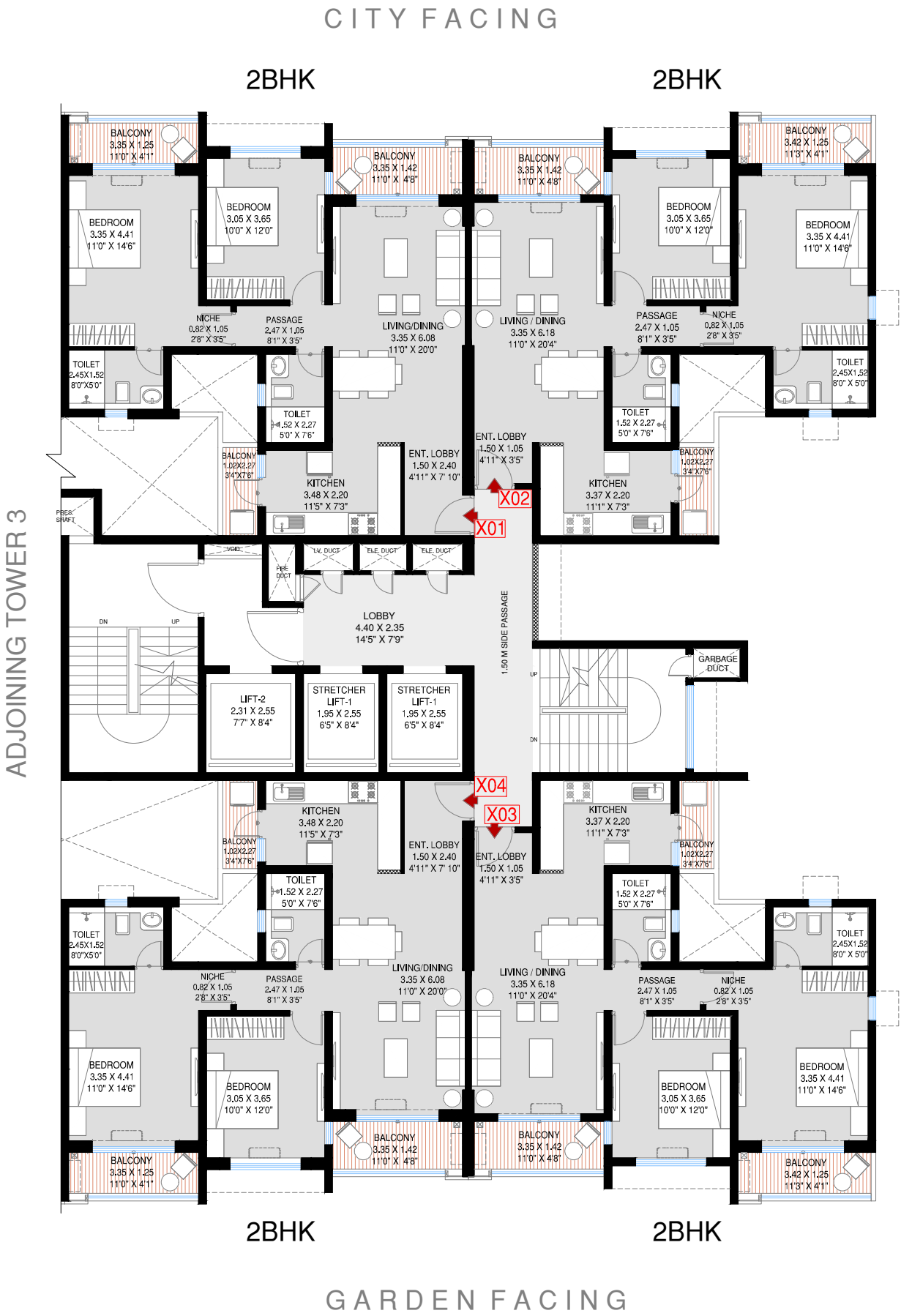


AREA AS PER RERA REFUGE FLOOR					
FLAT NO	RERA CARPET AREA (SQ M)	EXCLUSIVE AREA (SQ M)	TOTAL AREA (SQ M)	TOTAL AREA (SQ FT)	FACING
X01(1 BHK)	54.34	3.51	57.85	622.70	CITY FACING
X02 (2 BHK)	72.31	9.73	82.04	883.08	CITY FACING
X03 (2 BHK)	72.82	9.73	82.55	888.57	GARDEN FACING
X04 (2 BHK)	75.27	9.65	84.92	914.08	GARDEN FACING

BUILDING : TOWER 4
UNIT TYPE : 2 BHK, 1 BHK
UNIT NO : X01,X02,X03,X04
FLOOR NO : REFUGE FLOOR PLAN
7th,12th,17th,22nd,27th,32nd

- NOTES:
- All dimensions are measured from unfinished internal wall surface
 - The furniture accessories, painting, item,electronics goods additional fitting/ fixture. decorative item, false ceiling including finishing materials, specification,shades, sizes and colour of tiles etc. shown in the image are only indicative in nature and are only for the purpose of illustrating indicating a possible layout & do not form part of the standard specification.
 - Depth of balconies is measured from the outer edge.
 - Drawing not to scale.
 - All dimensions are in meter
 - 1 sq.m = 10.764 sq.ft
 - 1 m = 3.28 ft





AREA AS PER RERA TYPICAL FLOOR					
FLAT NO	RERA CARPET AREA IN SQ. M.	EXCLUSIVE AREA IN SQ. M.	TOTAL AREA IN SQ. M.	TOTAL AREA IN SQ. FT.	FACING
X01 (2 BHK)	75.27	9.65	84.92	914.08	CITY FACING
X02 (2 BHK)	72.82	9.73	82.55	888.57	CITY FACING
X03 (2 BHK)	72.82	9.73	82.55	888.57	GARDEN FACING
X04 (2 BHK)	75.27	9.65	84.92	914.08	GARDEN FACING

BUILDING : TOWER 4
UNIT TYPE : 2 BHK
UNIT NO : X01,X02,X03,X04
FLOOR NO : TYPICAL FLOOR PLAN
5th,6th,8th,9th,10th,11th,13th,14th,15th,16th,18th,19th,20th,
21st,23rd,24th,25th,26th,28th,29th,30th,31st

- NOTES:
- All dimensions are measured from unfinished internal wall surface
 - The furniture accessories, painting, item,electronics goods additional fitting/ fixture. decorative item, false ceiling including finishing materials, specification,shades, sizes and colour of tiles etc. shown in the image are only indicative in nature and are only for the purpose of illustrating indicating a possible layout & do not form part of the standard specification.
 - Depth of balconies is measured from the outer edge.
 - Drawing not to scale.
 - All dimensions are in meter
 - 1 sq.m = 10.764 sq.ft
 - 1 m = 3.28 ft



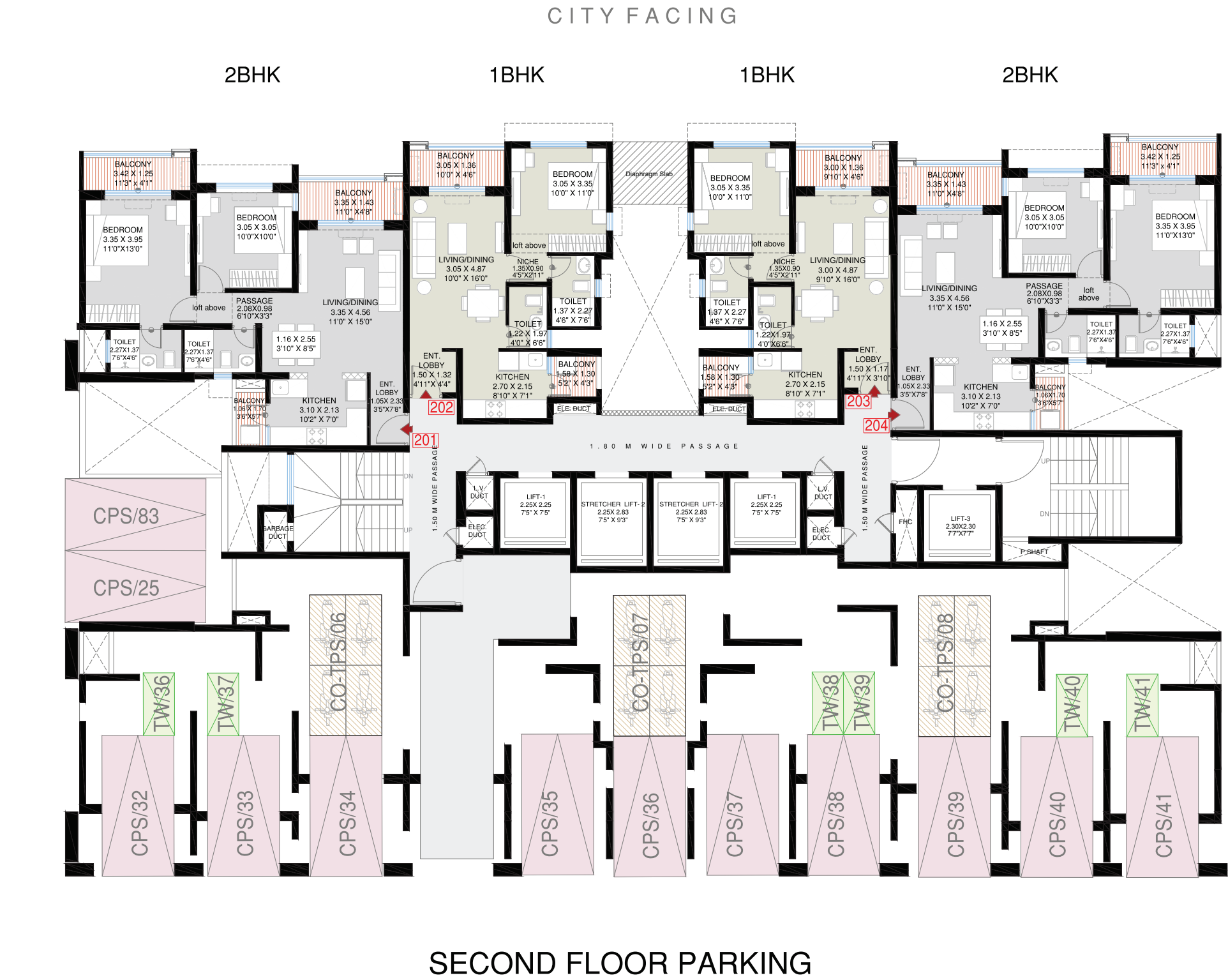
TOWER 5 FLOOR PLAN

[illegible]

NOTES:

- All dimensions are measured from unfinished internal wall surface
- The furniture accessories, painting, item, electronics goods additional fitting/ fixture. decorative item, false ceiling including finishing materials, specification, shades, sizes and colour of tiles etc. shown in the image are only indicative in nature and are only for the purpose of illustrating indicating a possible layout & do not form part of the standard specification.
- Depth of balconies is measured from the outer edge.
- Drawing not to scale.
- All dimensions are in meter
- 1 sq.m = 10.764 sq.ft
- 1 m = 3.28 ft



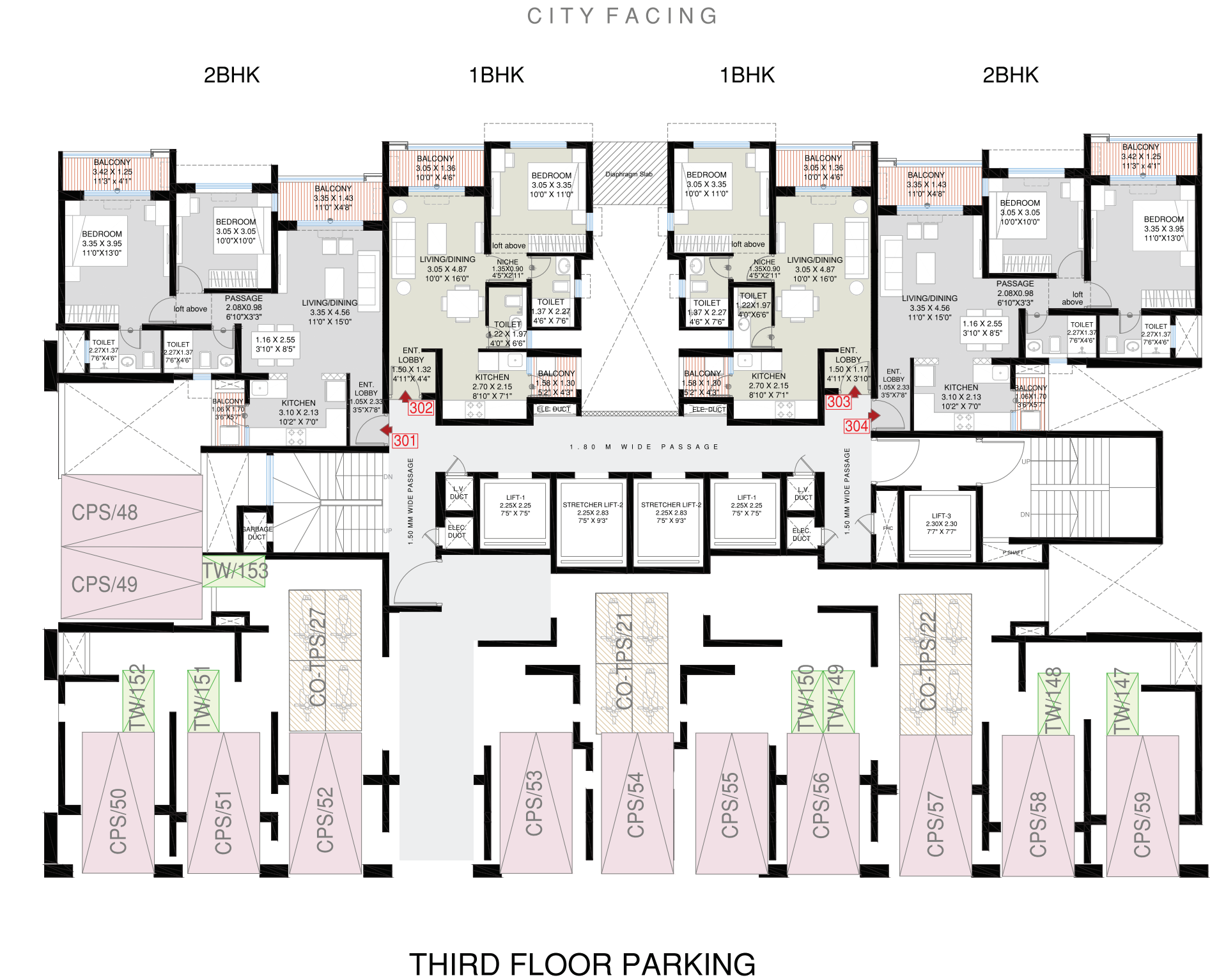


AREA AS PER RERA SECOND FLOOR					
FLAT NO	RERA CARPET AREA (SQ M)	EXCLUSIVE AREA (SQ M)	TOTAL AREA (SQ M)	TOTAL AREA (SQ FT)	FACING
201 (2 BHK)	64.78	9.32	74.10	797.61	CITY FACING
202 (1 BHK)	43.27	5.39	48.66	523.78	CITY FACING
203 (1 BHK)	42.90	5.34	48.24	519.26	CITY FACING
204 (2 BHK)	64.78	9.32	74.10	797.61	CITY FACING

BUILDING : TOWER 5,
UNIT TYPE : 2 BHK , 1 BHK
UNIT NO : 201, 202, 203, 204
FLOOR NO : SECOND FLOOR PLAN

- NOTES:
- All dimensions are measured from unfinished internal wall surface
 - The furniture accessories, painting, item,electronics goods additional fitting/ fixture. decorative item, false ceiling including finishing materials, specification,shades, sizes and colour of tiles etc. shown in the image are only indicative in nature and are only for the purpose of illustrating indicating a possible layout & do not form part of the standard specification.
 - Depth of balconies is measured from the outer edge.
 - Drawing not to scale.
 - All dimensions are in meter
 - 1 sq.m = 10.764 sq.ft
 - 1 m = 3.28 ft



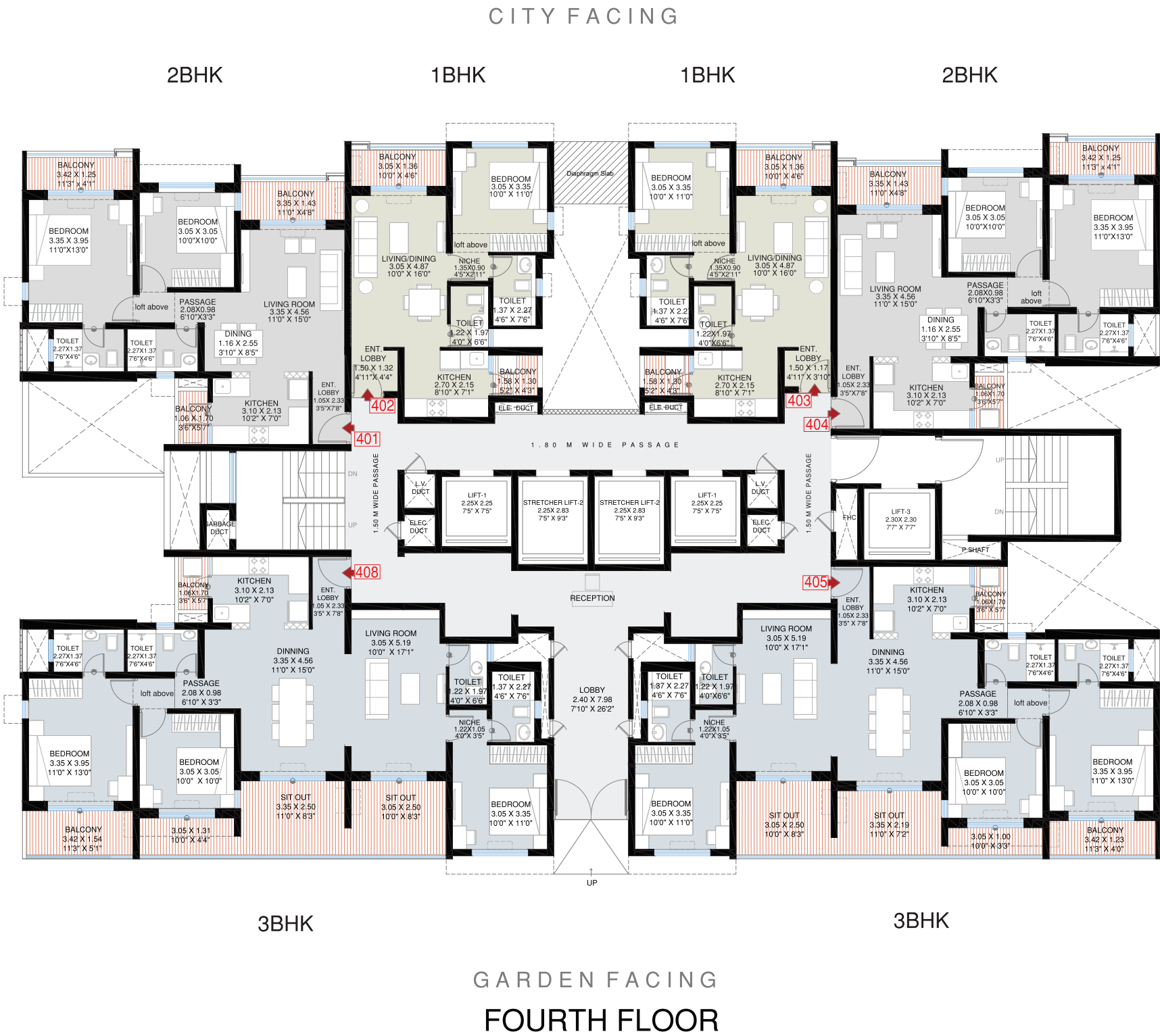


AREA AS PER RERA THIRD FLOOR					
FLAT NO	RERA CARPET AREA (SQ M)	EXCLUSIVE AREA (SQ M)	TOTAL AREA (SQ M)	TOTAL AREA (SQ FT)	FACING
301 (2 BHK)	64.78	9.32	74.10	797.61	CITY FACING
302 (1 BHK)	43.27	5.39	48.66	523.78	CITY FACING
303 (1 BHK)	43.00	5.39	48.39	520.87	CITY FACING
304 (2 BHK)	64.78	9.32	74.10	797.61	CITY FACING

BUILDING : TOWER 5,
UNIT TYPE : 2 BHK ,1 BHK
UNIT NO : 301,302, 303, 304
FLOOR NO : THIRD FLOOR PLAN

- NOTES:
- All dimensions are measured from unfinished internal wall surface
 - The furniture accessories, painting, item,electronics goods additional fitting/ fixture. decorative item, false ceiling including finishing materials, specification,shades, sizes and colour of tiles etc. shown in the image are only indicative in nature and are only for the purpose of illustrating indicating a possible layout & do not form part of the standard specification.
 - Depth of balconies is measured from the outer edge.
 - Drawing not to scale.
 - All dimensions are in meter
 - 1 sq.m = 10.764 sq.ft
 - 1 m = 3.28 ft



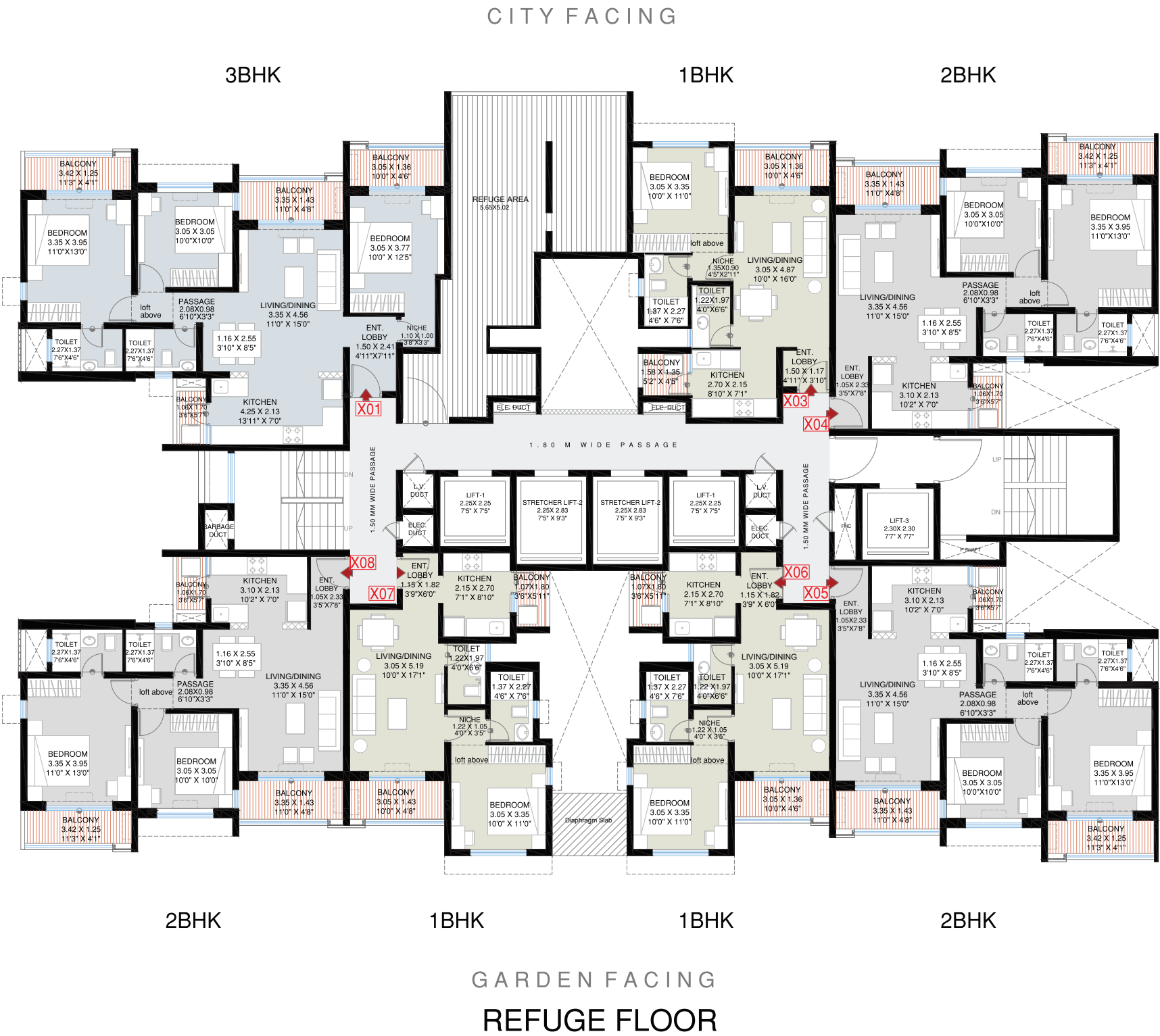


AREA AS PER RERA FOURTH FLOOR					
FLAT NO	RERA CARPET AREA (SQ M)	EXCLUSIVE AREA (SQ M)	TOTAL AREA (SQ M)	TOTAL AREA (SQ FT)	FACING
401 (2 BHK)	64.78	9.32	74.10	797.61	CITY FACING
402 (1 BHK)	43.27	5.39	48.66	523.78	CITY FACING
403 (1 BHK)	43.00	5.39	48.39	520.87	CITY FACING
404 (2 BHK)	64.78	9.32	74.10	797.61	CITY FACING
405 (3 BHK)	102.30	22.98	125.28	1348.51	GARDEN FACING
-	-	-	-	-	-
-	-	-	-	-	-
408 (3 BHK)	102.24	26.27	128.51	1383.28	GARDEN FACING

BUILDING : TOWER 5,
UNIT TYPE : 3 BHK, 2 BHK, 1 BHK
UNIT NO : 401, 402, 403, 404, 405, 408
FLOOR NO : FOURTH FLOOR PLAN

- NOTES:
- All dimensions are measured from unfinished internal wall surface
 - The furniture accessories, painting, item, electronics goods additional fitting/ fixture. decorative item, false ceiling including finishing materials, specification, shades, sizes and colour of tiles etc. shown in the image are only indicative in nature and are only for the purpose of illustrating indicating a possible layout & do not form part of the standard specification.
 - Depth of balconies is measured from the outer edge.
 - Drawing not to scale.
 - All dimensions are in meter
 - 1 sq.m = 10.764 sq.ft
 - 1 m = 3.28 ft



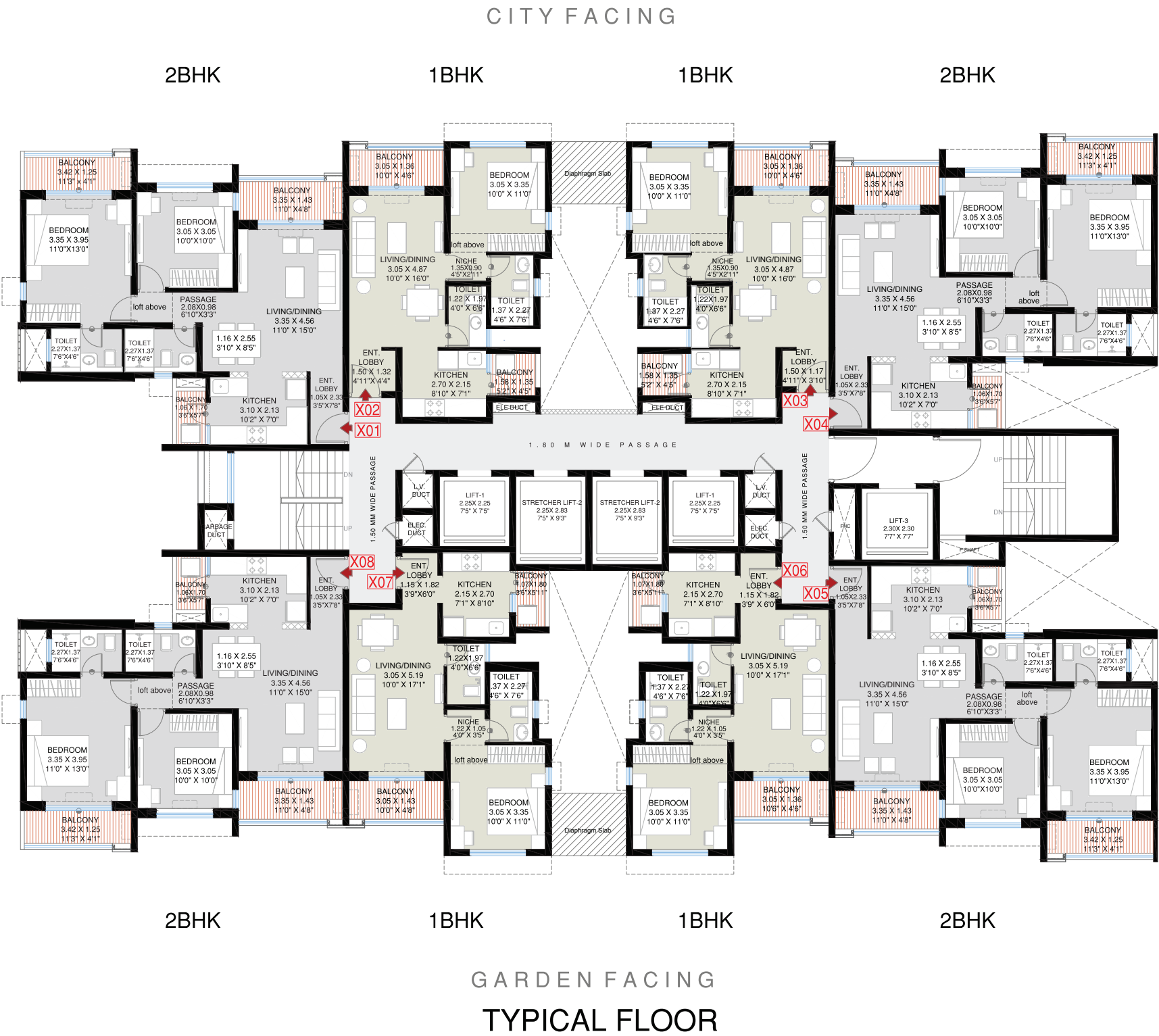


AREA AS PER RERA REFUGE FLOOR					
FLAT NO	RERA CARPET AREA (SQ M)	EXCLUSIVE AREA (SQ M)	TOTAL AREA (SQ M)	TOTAL AREA (SQ FT)	FACING
X01 (3 BHK)	83.13	12.85	95.98	1033.13	CITY FACING
-	-	-	-	-	-
X03 (1 BHK)	43.01	5.46	48.47	521.73	CITY FACING
X04 (2 BHK)	64.78	9.32	74.10	797.61	CITY FACING
X05 (2 BHK)	64.78	9.32	74.10	797.61	GARDEN FACING
X06 (1 BHK)	44.30	5.24	49.54	533.25	GARDEN FACING
X07 (1 BHK)	44.32	5.47	49.79	535.94	GARDEN FACING
X08 (2 BHK)	64.78	9.32	74.10	797.61	GARDEN FACING

BUILDING : TOWER 5,
UNIT TYPE : 3 BHK, 2 BHK , 1BHK
UNIT NO : X01,X03,X04,X05,X06,X07,X08
FLOOR NO : REFUGE FLOOR PLAN
7th,12th,17th

- NOTES:
- All dimensions are measured from unfinished internal wall surface
 - The furniture accessories, painting, item,electronics goods additional fitting/ fixture. decorative item, false ceiling including finishing materials, specification,shades, sizes and colour of tiles etc. shown in the image are only indicative in nature and are only for the purpose of illustrating indicating a possible layout & do not form part of the standard specification.
 - Depth of balconies is measured from the outer edge.
 - Drawing not to scale.
 - All dimensions are in meter
 - 1 sq.m = 10.764 sq.ft
 - 1 m = 3.28 ft





AREA AS PER RERA TYPICAL FLOOR					
FLAT NO	RERA CARPET AREA (SQ M)	EXCLUSIVE AREA (SQ M)	TOTAL AREA (SQ M)	TOTAL AREA (SQ FT)	FACING
X01 (2 BHK)	64.78	9.32	74.10	797.61	CITY FACING
X02 (1 BHK)	43.28	5.46	48.74	524.64	CITY FACING
X03 (1 BHK)	43.01	5.46	48.47	521.73	CITY FACING
X04 (2 BHK)	64.78	9.32	74.10	797.61	CITY FACING
X05 (2 BHK)	64.78	9.32	74.10	797.61	GARDEN FACING
X06 (1 BHK)	44.30	5.24	49.54	533.25	GARDEN FACING
X07 (1 BHK)	44.32	5.47	49.79	535.94	GARDEN FACING
X08 (2 BHK)	64.78	9.32	74.10	797.61	GARDEN FACING

BUILDING : TOWER 5,
UNIT TYPE : 2 BHK, 1 BHK
UNIT NO : X01,X02,X03,X04,X05,X06,X07,X08
FLOOR NO : TYPICAL FLOOR PLAN
5th,6th,8th,9th,10th,11th,13th,14th,15th,16th,18th,

- NOTES:
- All dimensions are measured from unfinished internal wall surface
 - The furniture accessories, painting, item,electronics goods additional fitting/ fixture. decorative item, false ceiling including finishing materials, specification,shades, sizes and colour of tiles etc. shown in the image are only indicative in nature and are only for the purpose of illustrating indicating a possible layout & do not form part of the standard specification.
 - Depth of balconies is measured from the outer edge.
 - Drawing not to scale.
 - All dimensions are in meter
 - 1 sq.m = 10.764 sq.ft
 - 1 m = 3.28 ft

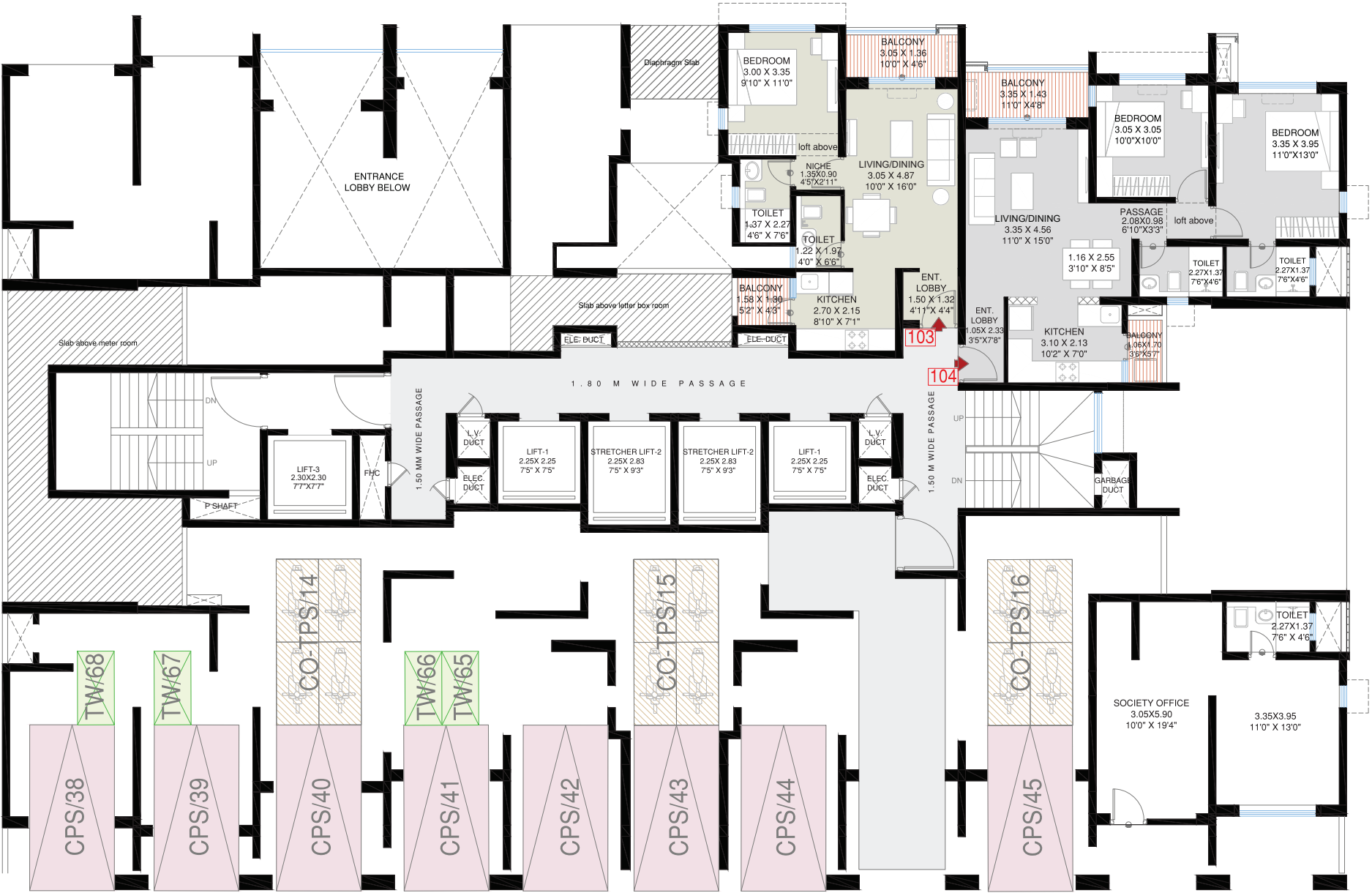


TOWER 6 FLOOR PLAN

CITY FACING

1BHK

2BHK



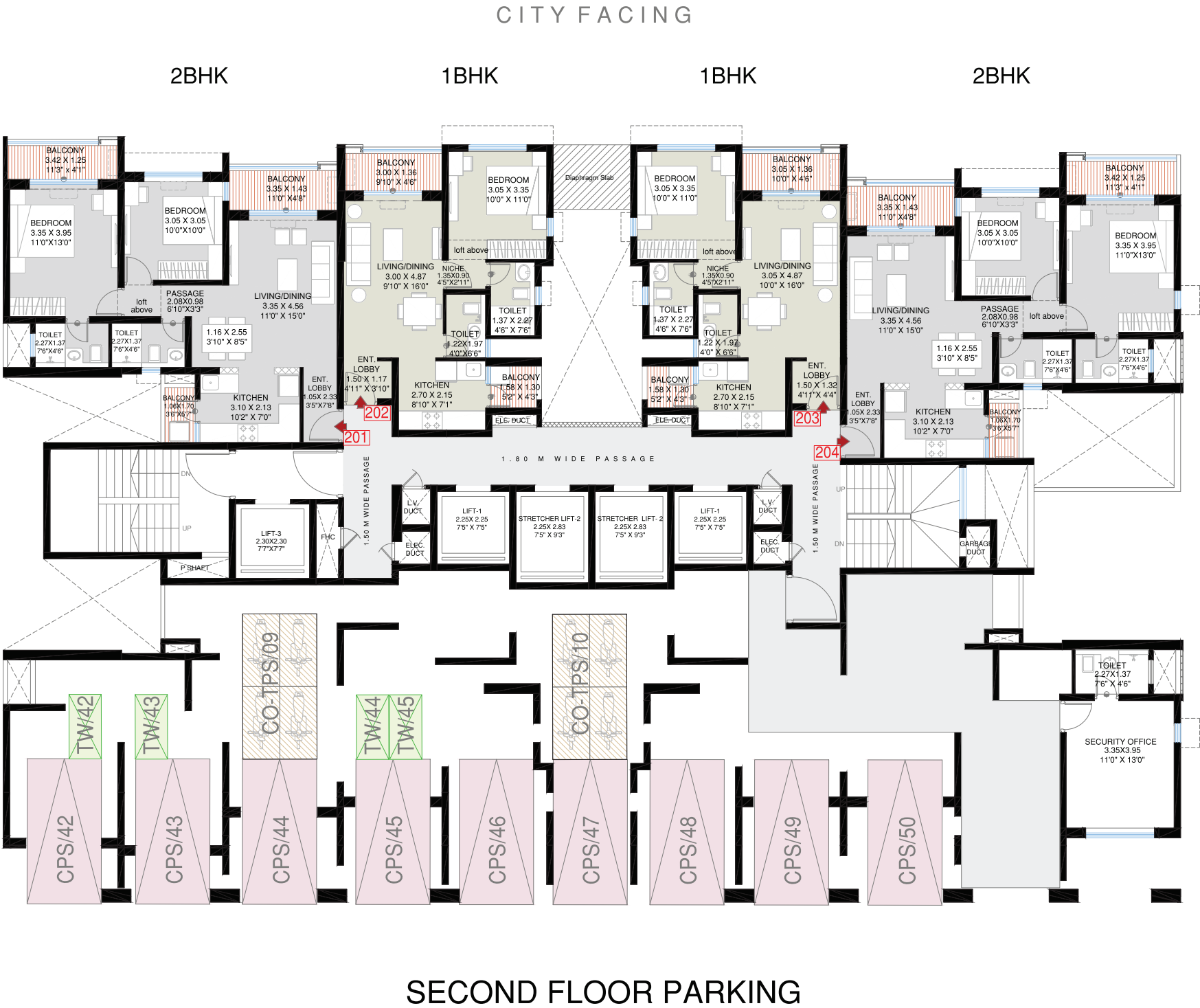
FIRST FLOOR PARKING

AREA AS PER RERA FIRST FLOOR					
FLAT NO	RERA CARPET AREA (SQ. M)	EXCLUSIVE AREA (SQ. M)	TOTAL AREA (SQ. M)	TOTAL AREA (SQ. FT.)	FACING
103 (1 BHK)	43.10	5.39	48.49	521.95	CITY FACING
104 (2 BHK)	63.73	5.73	69.46	747.67	CITY FACING

BUILDING : TOWER 6,
UNIT TYPE : 2 BHK , 1 BHK
UNIT NO : 103,104
FLOOR NO : FIRST FLOOR PLAN

- NOTES:
- All dimensions are measured from unfinished internal wall surface
 - The furniture accessories, painting, item,electronics goods additional fitting/ fixture. decorative item, false ceiling including finishing materials, specification,shades, sizes and colour of tiles etc. shown in the image are only indicative in nature and are only for the purpose of illustrating indicating a possible layout & do not form part of the standard specification.
 - Depth of balconies is measured from the outer edge.
 - Drawing not to scale.
 - All dimensions are in meter
 - 1 sq.m = 10.764 sq.ft
 - 1 m = 3.28 ft





AREA AS PER RERA SECOND FLOOR					
FLAT NO	RERA CARPET AREA (SQ. M)	EXCLUSIVE AREA (SQ. M)	TOTAL AREA (SQ. M)	TOTAL AREA (SQ. FT.)	FACING
201 (2 BHK)	64.78	9.32	74.10	797.61	CITY FACING
202 (1 BHK)	42.90	5.34	48.24	519.26	CITY FACING
203 (1 BHK)	43.27	5.39	48.66	523.78	CITY FACING
204 (2 BHK)	64.78	9.32	74.10	797.61	CITY FACING

BUILDING : TOWER 6,
UNIT TYPE : 2 BHK , 1 BHK
UNIT NO : 201,202,203,204
FLOOR NO : SECOND FLOOR PLAN

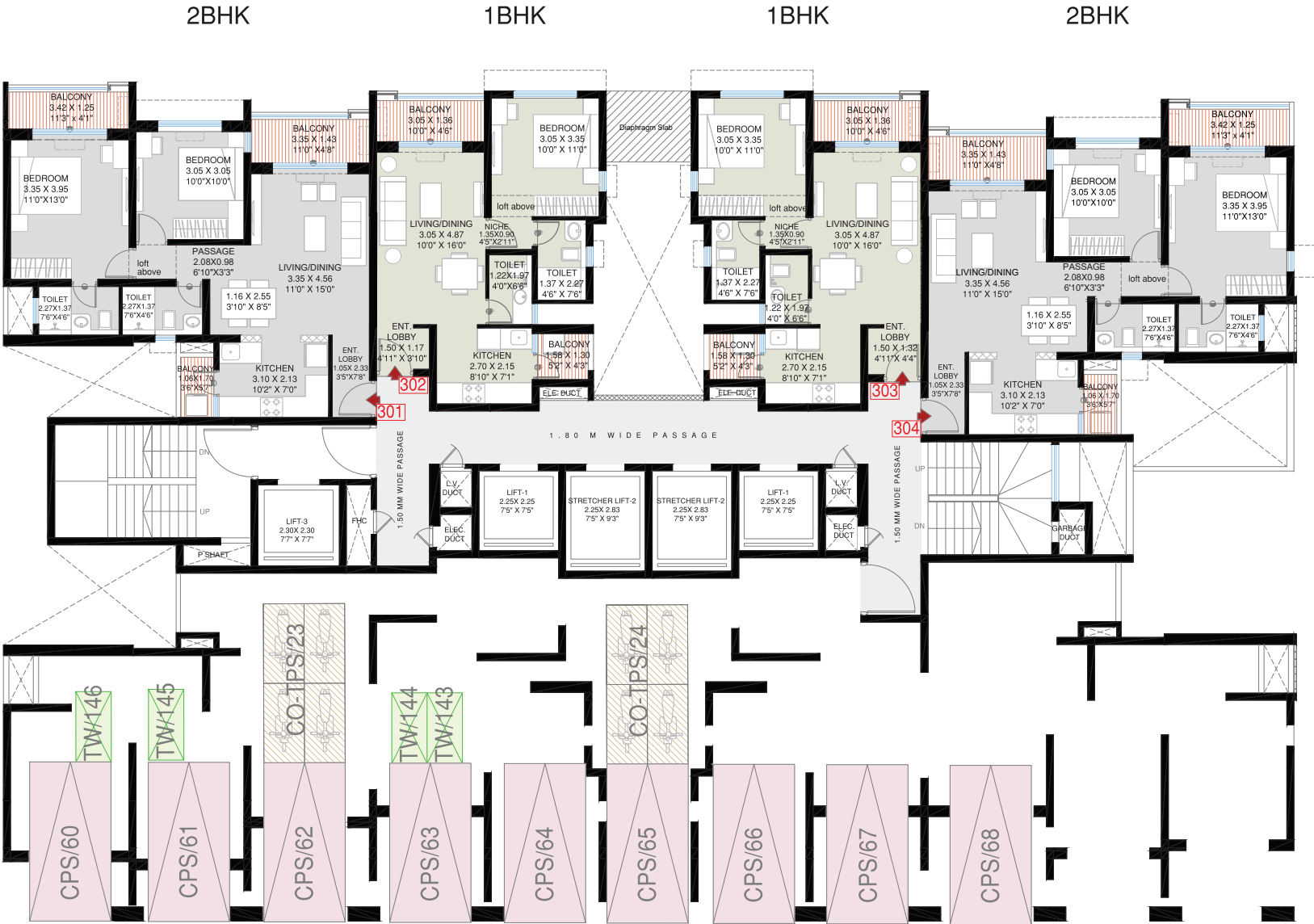
- NOTES:
- All dimensions are measured from unfinished internal wall surface
 - The furniture accessories, painting, item,electronics goods additional fitting/ fixture. decorative item, false ceiling including finishing materials, specification,shades, sizes and colour of tiles etc. shown in the image are only indicative in nature and are only for the purpose of illustrating indicating a possible layout & do not form part of the standard specification.
 - Depth of balconies is measured from the outer edge.
 - Drawing not to scale.
 - All dimensions are in meter
 - 1 sq. =
 - 1 m =



AREA AS PER RERA THIRD FLOOR					
FLAT NO	RERA CARPET AREA (SQ. M)	EXCLUSIVE AREA (SQ. M)	TOTAL AREA (SQ. M)	TOTAL AREA (SQ. FT.)	FACING
301 (2 BHK)	64.78	9.32	74.10	797.61	CITY FACING
302 (1 BHK)	43.00	5.39	48.39	520.87	CITY FACING
303 (1 BHK)	43.27	5.39	48.66	523.78	CITY FACING
304 (2 BHK)	64.78	9.32	74.10	797.61	CITY FACING

BUILDING : TOWER 6,
UNIT TYPE : 2 BHK , 1 BHK
UNIT NO : 301,302,303,304
FLOOR NO : THIRD FLOOR PLAN

- NOTES:
- All dimensions are measured from unfinished internal wall surface
 - The furniture accessories, painting, item,electronics goods additional fitting/ fixture. decorative item, false ceiling including finishing materials, specification,shades, sizes and colour of tiles etc. shown in the image are only indicative in nature and are only for the purpose of illustrating indicating a possible layout & do not form part of the standard specification.
 - Depth of balconies is measured from the outer edge.
 - Drawing not to scale.
 - All dimensions are in meter
 - 1 sq.m = 10.764 sq.ft
 - 1 m = 3.28 ft



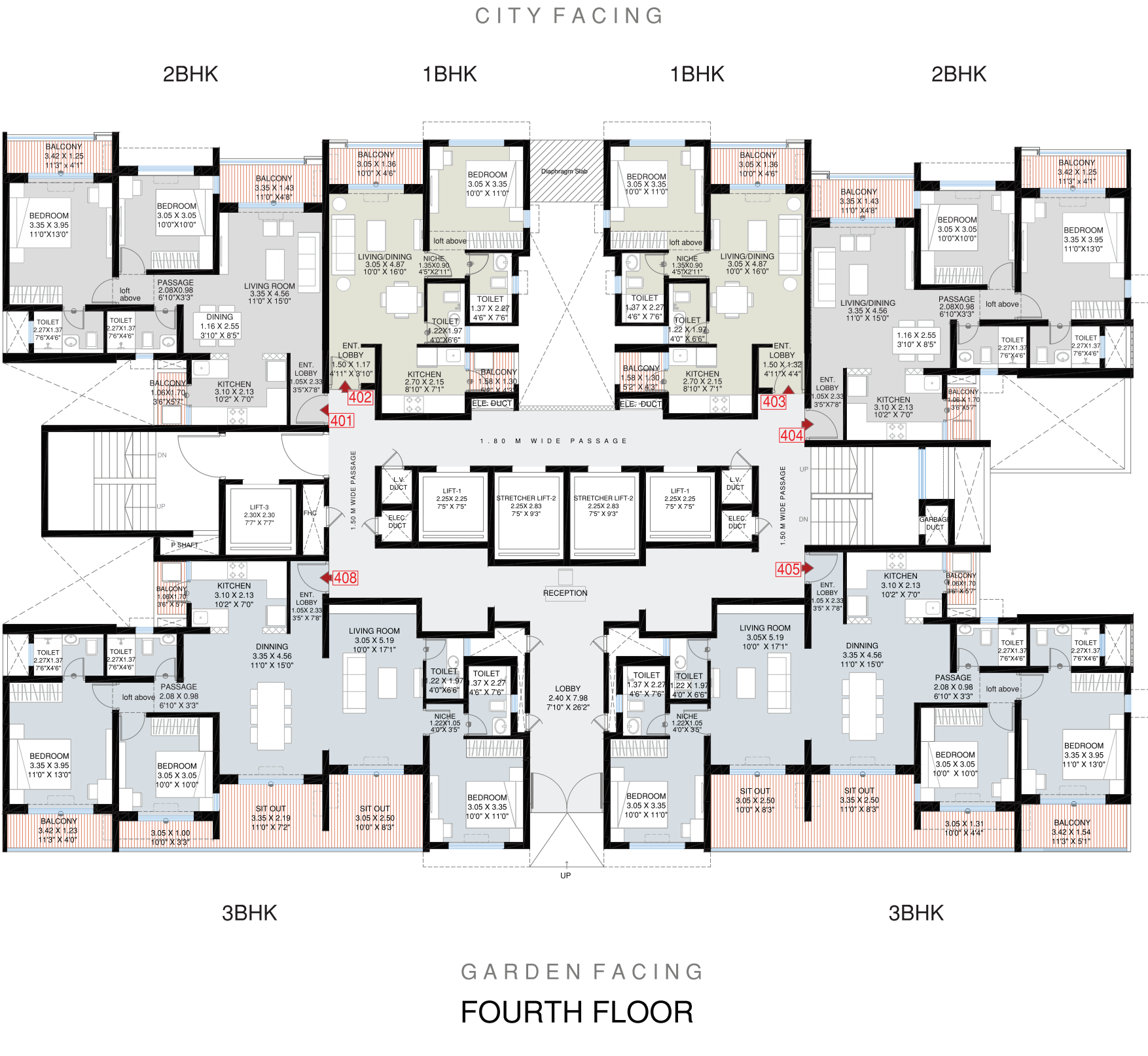
THIRD FLOOR PARKING

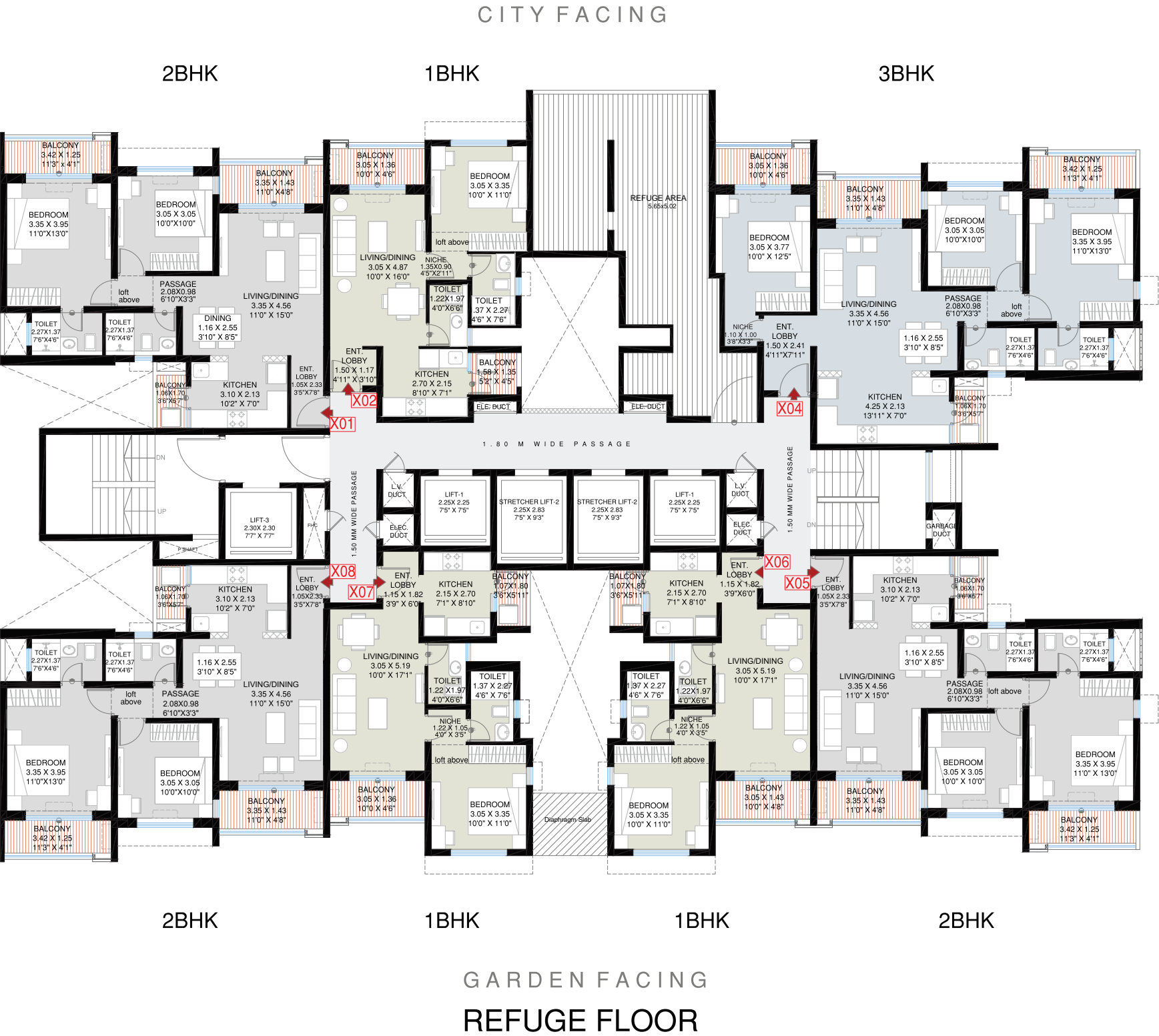


AREA AS PER RERA FOURTH FLOOR					
FLAT NO	RERA CARPET AREA (SQ. M)	EXCLUSIVE AREA (SQ. M)	TOTAL AREA (SQ. M)	TOTAL AREA (SQ. FT.)	FACING
401 (2 BHK)	64.78	9.32	74.10	797.61	CITY FACING
402 (1 BHK)	43.00	5.39	48.39	520.87	CITY FACING
403 (1 BHK)	43.27	5.39	48.66	523.78	CITY FACING
404 (2 BHK)	64.78	9.32	74.10	797.61	CITY FACING
405 (3 BHK)	102.24	26.27	128.51	1383.28	GARDEN FACING
-	-	-	-	-	-
-	-	-	-	-	-
408 (3 BHK)	102.30	22.98	125.28	1348.51	GARDEN FACING

BUILDING : TOWER 6,
UNIT TYPE : 3 BHK, 2 BHK, 1 BHK
UNIT NO : 401, 402, 403, 404, 405, 408
FLOOR NO : FOURTH FLOOR PLAN

- NOTES:
- All dimensions are measured from unfinished internal wall surface
 - The furniture accessories, painting, item,electronics goods additional fitting/ fixture. decorative item, false ceiling including finishing materials, specification,shades, sizes and colour of tiles etc. shown in the image are only indicative in nature and are only for the purpose of illustrating indicating a possible layout & do not form part of the standard specification.
 - Depth of balconies is measured from the outer edge.
 - Drawing not to scale.
 - All dimensions are in meter
 - 1 sq.m = 10.764 sq.ft
 - 1 m = 3.28 ft





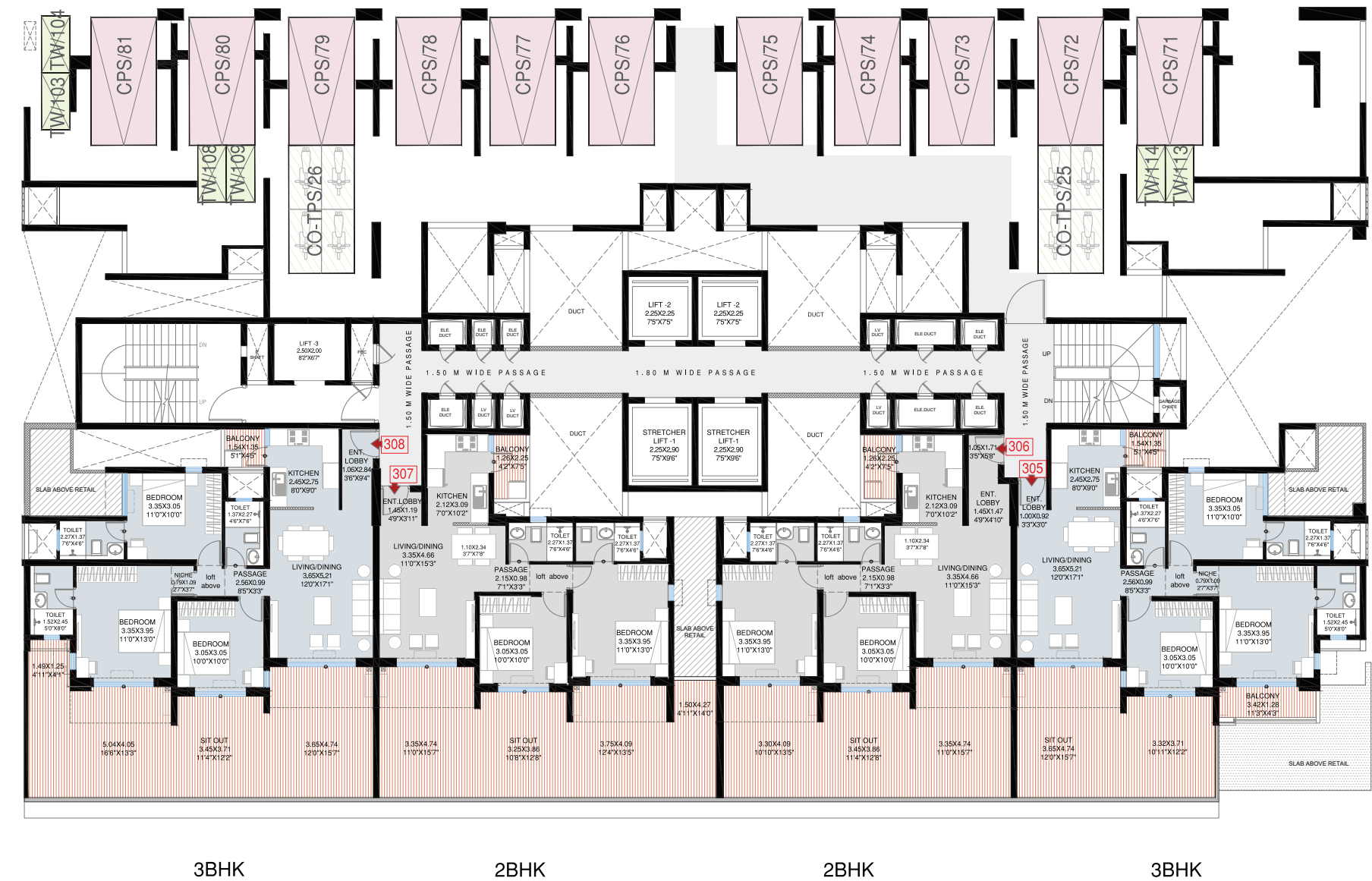
AREA AS PER RERA REFUGE FLOOR					
FLAT NO	RERA CARPET AREA (SQ. M)	EXCLUSIVE AREA (SQ. M)	TOTAL AREA (SQ. M)	TOTAL AREA (SQ. FT)	FACING
X01(2 BHK)	64.78	9.32	74.10	797.61	CITY FACING
X02 (1 BHK)	43.01	5.46	48.47	521.73	CITY FACING
-	-	-	-	-	-
X04 (3 BHK)	83.13	12.85	95.98	1033.13	CITY FACING
X05 (2 BHK)	64.78	9.32	74.10	797.61	GARDEN FACING
X06 (1 BHK)	44.32	5.47	49.79	535.94	GARDEN FACING
X07 (1 BHK)	44.30	5.24	49.54	533.25	GARDEN FACING
X08 (2 BHK)	64.78	9.32	74.10	797.61	GARDEN FACING

BUILDING : TOWER 6,
UNIT TYPE : 3 BHK, 2 BHK, 1BHK
UNIT NO : X01,X02,X04,X05,X06,X07,X08
FLOOR NO : REFUGE FLOOR PLAN
7th,12th,17th,22nd,27th,32nd

- NOTES:
- All dimensions are measured from unfinished internal wall surface
 - The furniture accessories, painting, item,electronics goods additional fitting/ fixture. decorative item, false ceiling including finishing materials, specification,shades, sizes and colour of tiles etc. shown in the image are only indicative in nature and are only for the purpose of illustrating indicating a possible layout & do not form part of the standard specification.
 - Depth of balconies is measured from the outer edge.
 - Drawing not to scale.
 - All dimensions are in meter
 - 1 sq.m = 10.764 sq.ft
 - 1 m = 3.28 ft



TOWER 7 FLOOR PLAN

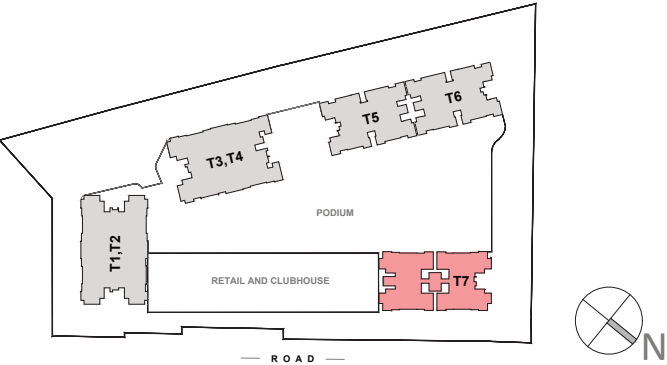


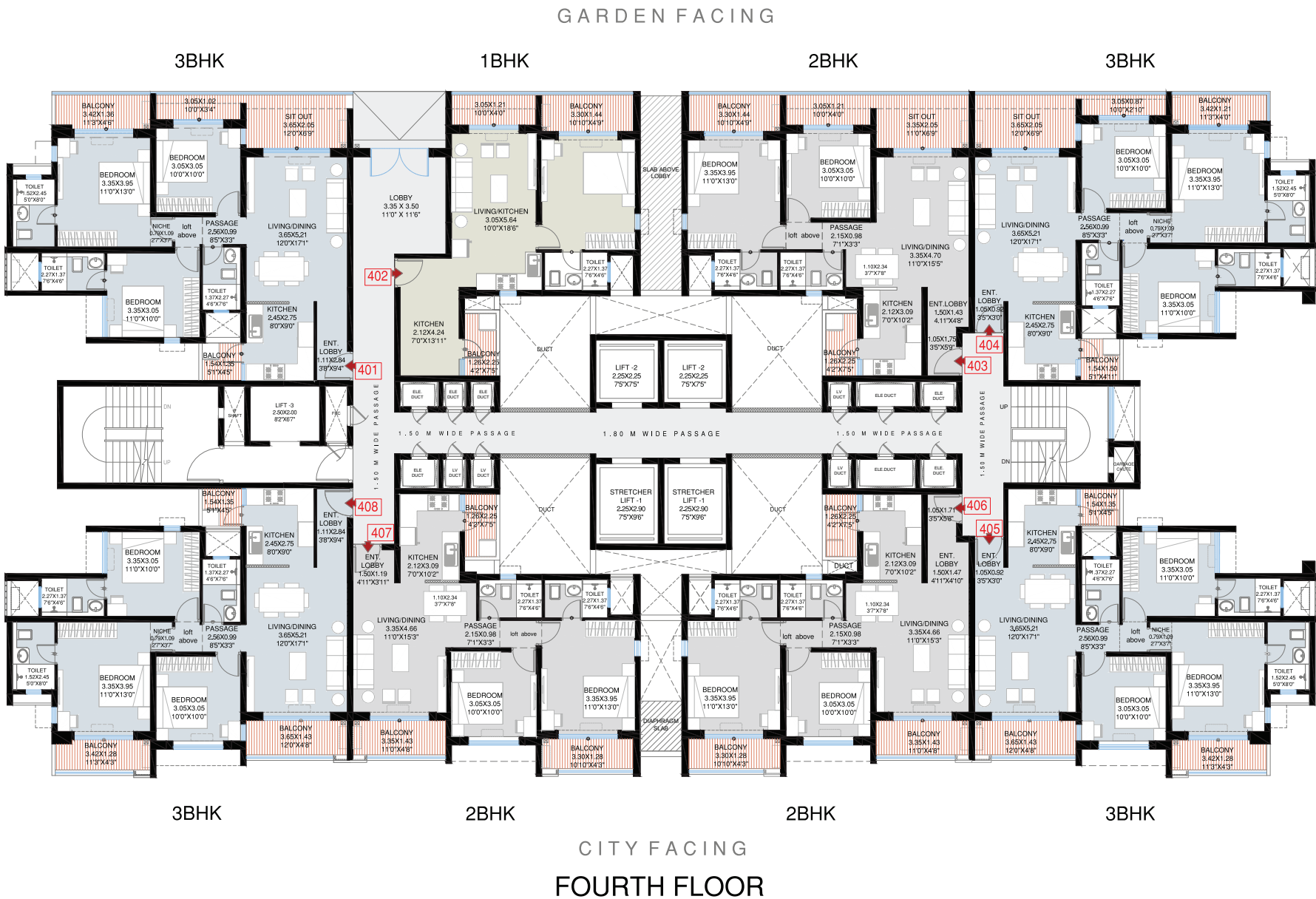
CITY FACING
THIRD FLOOR

AREA AS PER RERA THIRD FLOOR					
FLAT NO	RERA CARPET AREA IN SQ.M.	EXCLUSIVE AREA IN SQ.M.	TOTAL AREA IN SQ.M.	TOTAL AREA IN SQ.FT.	FACING
305 (3 BHK)	81.02	34.21	115.23	1240.34	CITY FACING
306 (2 BHK)	66.73	43.78	110.51	1189.53	CITY FACING
307 (2 BHK)	64.16	50.95	115.11	1239.04	CITY FACING
308 (3 BHK)	83.91	52.96	136.87	1473.27	CITY FACING

BUILDING : TOWER 7,
UNIT TYPE : 3 BHK 2 BHK ,
UNIT NO : 305,306,307,308
FLOOR NO : THIRD FLOOR PLAN

- NOTES:
- All dimensions are measured from unfinished internal wall surface.
 - The furniture accessories, painting, item,electronics goods additional fitting/ fixture. decorative item, false ceiling including finishing materials, specification,shades, sizes and colour of tiles etc. shown in the image are only indicative in nature and are only for the purpose of illustrating indicating a possible layout & do not form part of the standard specification.
 - Depth of balconies is measured from the outer edge.
 - Drawing is not to scale.
 - All dimensions are in meter.
 - 1 sq.m = 10.764 sq.ft
 - 1 m = 3.28 ft



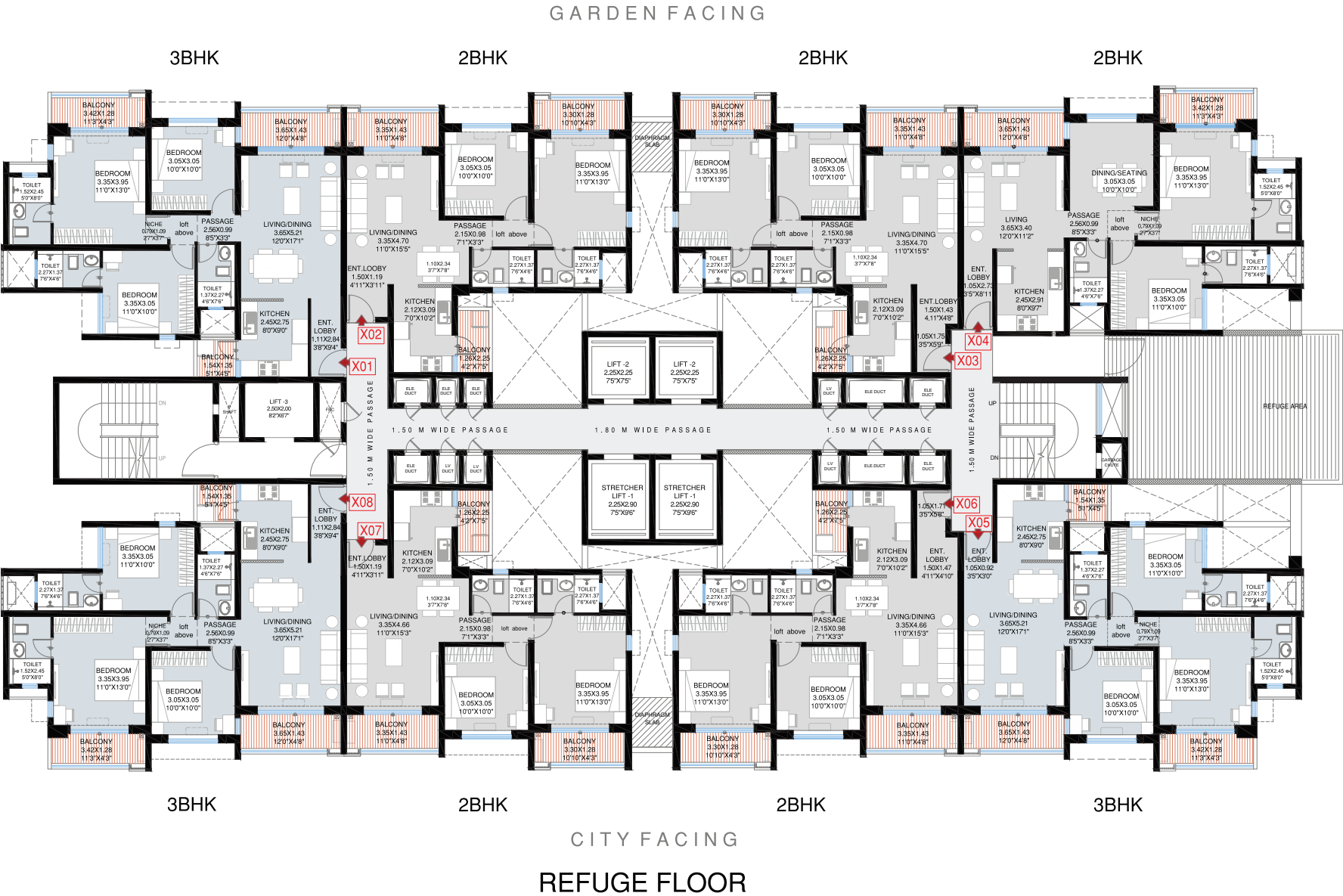


AREA AS PER RERA FOURTH FLOOR					
FLAT NO	RERA CARPET AREA IN SQ.M.	EXCLUSIVE AREA IN SQ.M.	TOTAL AREA IN SQ.M.	TOTAL AREA IN SQ.FT.	FACING
401 (3 BHK)	83.41	16.17	99.58	1071.88	GARDEN FACING
402 (1 BHK)	46.31	10.23	56.54	608.60	GARDEN FACING
403 (2 BHK)	66.92	17.13	84.05	904.71	GARDEN FACING
404 (3 BHK)	81.13	15.36	96.49	1038.62	GARDEN FACING
405 (3 BHK)	80.07	10.03	90.10	969.84	CITY FACING
406 (2 BHK)	65.77	10.27	76.04	818.49	CITY FACING
407 (2 BHK)	63.14	10.27	73.41	790.19	CITY FACING
408 (3 BHK)	82.37	10.03	92.40	994.59	CITY FACING

BUILDING : TOWER 7,
UNIT TYPE : 3 BHK 2 BHK ,
UNIT NO : X01,X02,X03,X04,X05,X06,X07,X08
FLOOR NO : FOURTH FLOOR PLAN

- NOTES:
- All dimensions are measured from unfinished internal wall surface.
 - The furniture accessories, painting, item,electronics goods additional fitting/ fixture. decorative item, false ceiling including finishing materials, specification,shades, sizes and colour of tiles etc. shown in the image are only indicative in nature and are only for the purpose of illustrating indicating a possible layout & do not form part of the standard specification.
 - Depth of balconies is measured from the outer edge.
 - Drawing is not to scale.
 - All dimensions are in meter.
 - 1 sq.m = 10.764 sq.ft
 - 1 m = 3.28 ft





AREA AS PER RERA REFUGE FLOOR					
FLAT NO	RERA CARPET AREA IN SQ.M.	EXCLUSIVE AREA IN SQ.M.	TOTAL AREA IN SQ.M.	TOTAL AREA IN SQ.FT	FACING
X01 (3 BHK)	82.37	10.03	92.40	994.59	GARDEN FACING
X02 (2 BHK)	63.28	10.27	73.55	791.69	GARDEN FACING
X03 (2 BHK)	65.89	10.27	76.16	819.79	GARDEN FACING
X04 (2 BHK)	75.81	8.12	83.93	903.42	GARDEN FACING
X05 (3 BHK)	80.07	10.03	90.10	969.84	CITY FACING
X06 (2 BHK)	65.77	10.27	76.04	818.49	CITY FACING
X07 (2 BHK)	63.14	10.27	73.41	790.19	CITY FACING
X08 (3 BHK)	82.37	10.03	92.40	994.59	CITY FACING

BUILDING : TOWER 7,
UNIT TYPE : 3 BHK 2 BHK ,
UNIT NO : X01,X02,X03,X04,X05,X06,X07,X08
FLOOR NO : REFUGE FLOOR PLAN
7th,12th,17th,22nd,27th,32nd

- NOTES:
- All dimensions are measured from unfinished internal wall surface.
 - The furniture accessories, painting, item,electronics goods additional fitting/ fixture. decorative item, false ceiling including finishing materials, specification,shades, sizes and colour of tiles etc. shown in the image are only indicative in nature and are only for the purpose of illustrating indicating a possible layout & do not form part of the standard specification.
 - Depth of balconies is measured from the outer edge.
 - Drawing is not to scale.
 - All dimensions are in meter.
 - 1 sq.m = 10.764 sq.ft
 - 1 m = 3.28 ft



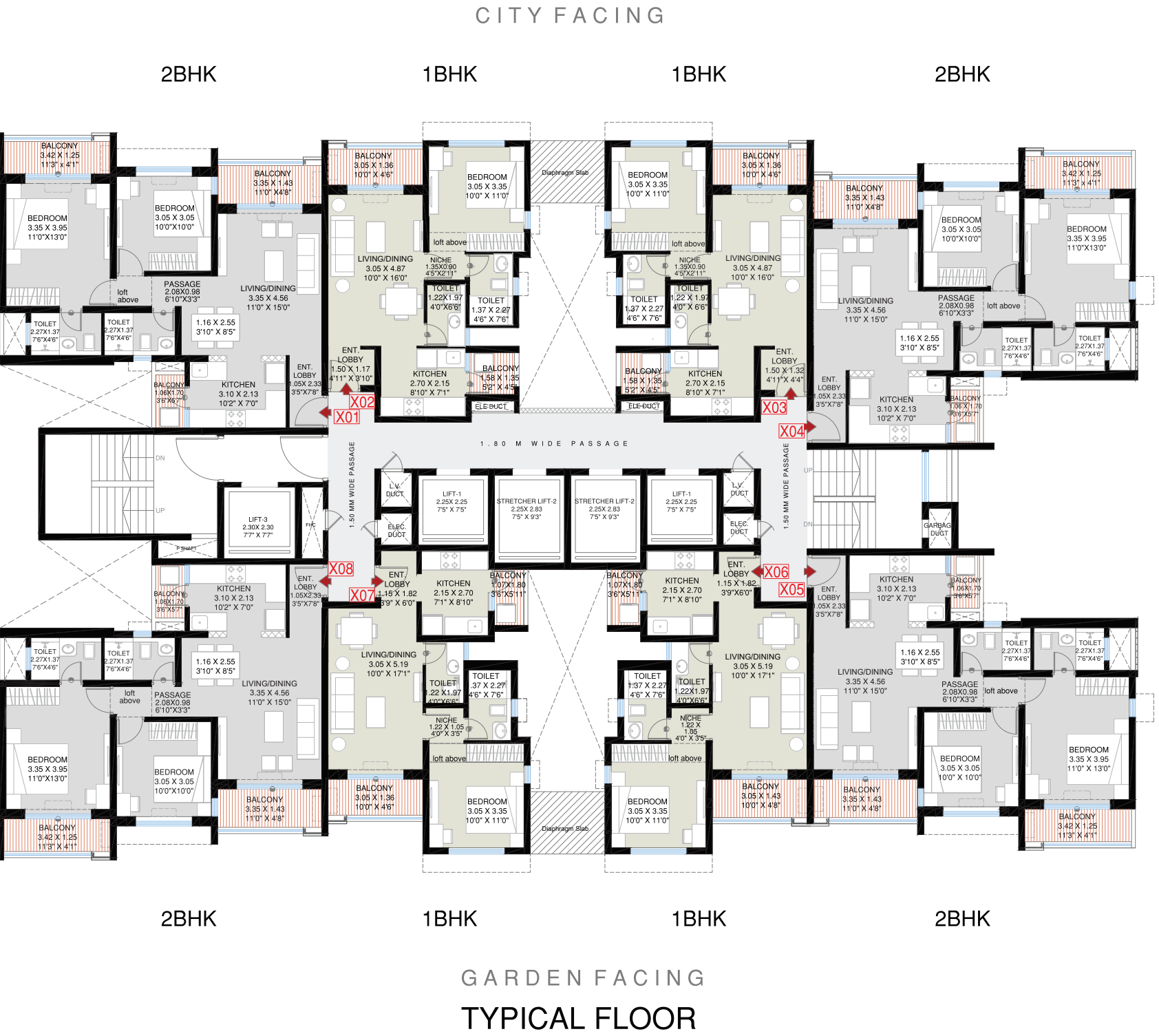


AREA AS PER RERA TYPICAL FLOOR					
FLAT NO	RERA CARPET AREA IN SQ.M.	EXCLUSIVE AREA IN SQ.M.	TOTAL AREA IN SQ.M.	TOTAL AREA IN SQ FT	FACING
X01 (3 BHK)	82.37	10.03	92.40	995	GARDEN FACING
X02 (2 BHK)	63.28	10.27	73.55	792	GARDEN FACING
X03 (2 BHK)	65.89	10.27	76.16	820	GARDEN FACING
X04 (3 BHK)	80.09	10.24	90.33	972	GARDEN FACING
X05 (3 BHK)	80.07	10.03	90.10	970	CITY FACING
X06 (2 BHK)	65.77	10.27	76.04	818	CITY FACING
X07 (2 BHK)	63.14	10.27	73.41	790	CITY FACING
X08 (3 BHK)	82.37	10.03	92.40	995	CITY FACING

BUILDING : TOWER 7,
UNIT TYPE : 3 BHK 2 BHK ,
UNIT NO : X01,X02,X03,X04,X05,X06,X07,X08
FLOOR NO : TYPICAL FLOOR PLAN
5th,6th,8th,9th,10th,11th,13th,14th,15th,16th,18th,19th,20th,
21st,23rd,24th,25th,26th,28th,29th,30th,31st

- NOTES:
- All dimensions are measured from unfinished internal wall surface.
 - The furniture accessories, painting, item,electronics goods additional fitting/ fixture. decorative item, false ceiling including finishing materials, specification,shades, sizes and colour of tiles etc. shown in the image are only indicative in nature and are only for the purpose of illustrating indicating a possible layout & do not form part of the standard specification.
 - Depth of balconies is measured from the outer edge.
 - Drawing is not to scale.
 - All dimensions are in meter.
 - 1 sq.m = 10.764 sq.ft
 - 1 m = 3.28 ft





AREA AS PER RERA TYPICAL FLOOR					
FLAT NO	RERA CARPET AREA (SQ. M)	EXCLUSIVE AREA (SQ. M)	TOTAL AREA (SQ. M)	TOTAL AREA (SQ. FT.)	FACING
X01 (2 BHK)	64.78	9.32	74.10	797.61	CITY FACING
X02 (1 BHK)	43.01	5.46	48.47	521.73	CITY FACING
X03 (1 BHK)	43.28	5.46	48.74	524.64	CITY FACING
X04 (2 BHK)	64.78	9.32	74.10	797.61	CITY FACING
X05 (2 BHK)	64.78	9.32	74.10	797.61	GARDEN FACING
X06 (1 BHK)	44.32	5.47	49.79	535.94	GARDEN FACING
X07 (1 BHK)	44.30	5.24	49.54	533.25	GARDEN FACING
X08 (2 BHK)	64.78	9.32	74.10	797.61	GARDEN FACING

BUILDING : TOWER 6,
UNIT TYPE : 2 BHK, 1 BHK
UNIT NO : X01,X02,X03,X04,X05,X06,X07,X08
FLOOR NO : TYPICAL FLOOR PLAN
5th,6th,8th,9th,10th,11th,13th,14th,15th,16th,18th,
19th,20th,21st,23rd,24th,25th,26th,28th,29th,
30th,31st

- NOTES:
- All dimensions are measured from unfinished internal wall surface
 - The furniture accessories, painting, item,electronics goods additional fitting/ fixture. decorative item, false ceiling including finishing materials, specification,shades, sizes and colour of tiles etc. shown in the image are only indicative in nature and are only for the purpose of illustrating indicating a possible layout & do not form part of the standard specification.
 - Depth of balconies is measured from the outer edge.
 - Drawing not to scale.
 - All dimensions are in meter
 - 1 sq.m = 10.764 sq.ft
 - 1 m = 3.28 ft



GODREJ EMERALD WATERS

PIMPRI, PUNE



The project Godrej Emerald Waters is registered with MahaRERA Registration No P52100051200 available at website:<http://maharera.mahaonline.gov.in>.