



Code Name

The Oasis





# Simply Iconic

**7 Acres** of Serene Living with  
~**90%** Open Space





LESS DENSITY

Fewer Neighbours.  
Lesser Waiting Time.



Only 364  
Exclusive Residences



30+  
Amenities that Feel Entirely Yours



ONLY LUXURY 3BHK'S

# A Like-Minded Thriving Community





LARGE LIVING BALCONIES

# Beyond the Walls, Into the Outdoors



115 sqft. to 170 sqft.



# Everything Amplified

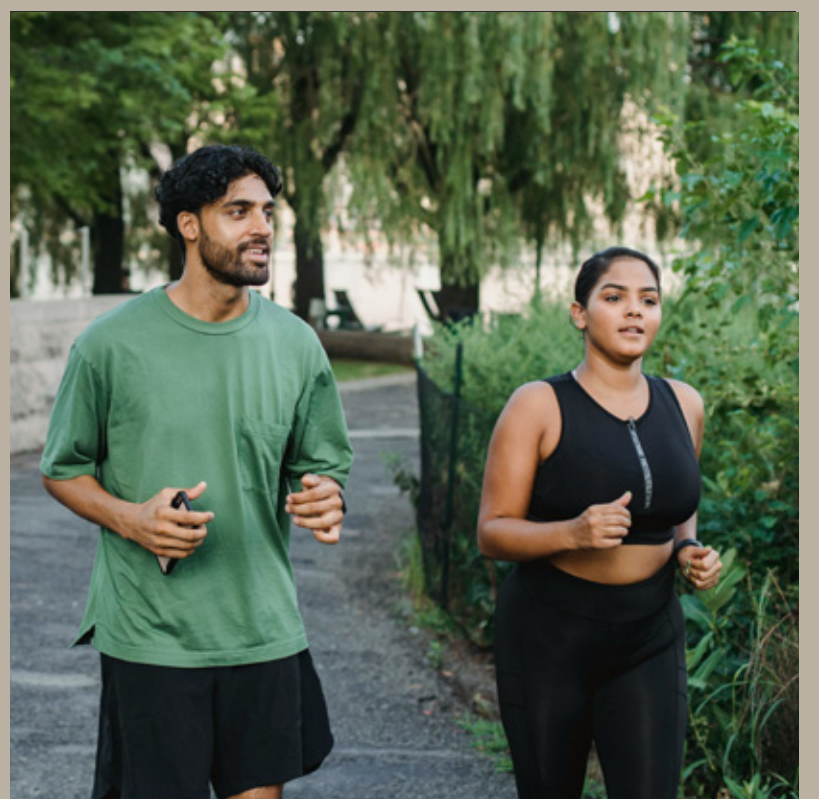
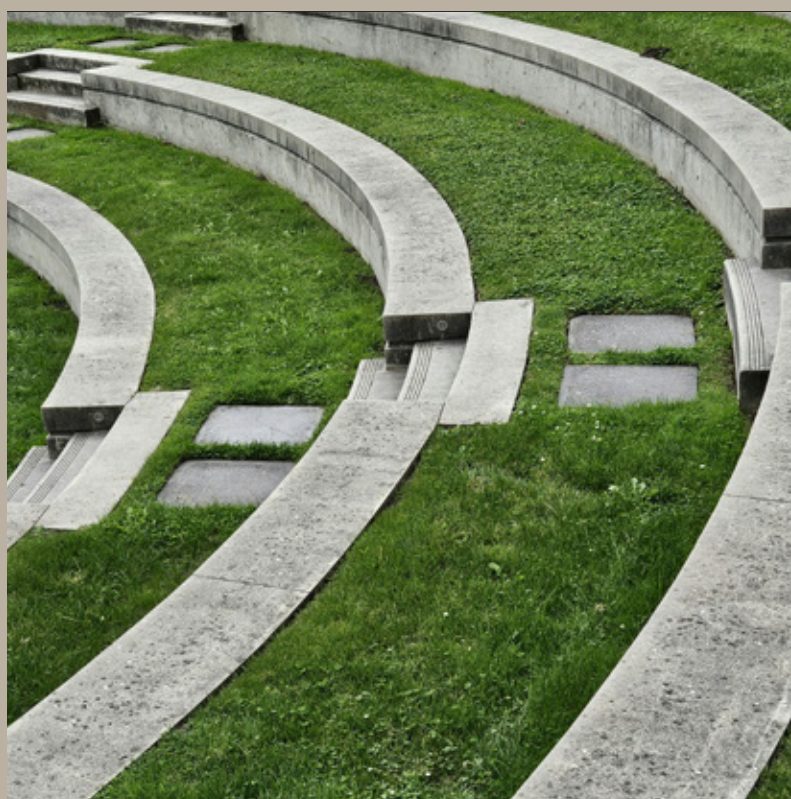


3.5 Acres  
Of Clubhouse, Sports and Amenities



15+ SPORTING &  
OUTDOOR AMENITIES

# Wellness with an Active Lifestyle





SPACES THAT INSPIRE CONNECTIONS

# Socially Enabled Landscape





LIVE AMIDST SOME NEW  
NEIGHBOURS AND SOME  
OLD ONES.

# 100+ Trees Retained



Feel Upscaled  
In Every Sense



# Arrival Experience at Each Step





COMMUNITY BUILT  
FOR FOOTSTEPS

# A Pedestrian Friendly Community



74%

Drive Free Zone



## Flow of Traffic

Efficient logistics for traffic and deliveries.



## Secure Entrances

Separate entrances for residents and visitors.



## Delivery Storage

Dedicated delivery storage in each lobby.





FACADE

# Brick-finish Exteriors

Designed with a brick finish cladding  
that remains timeless for years to come.



PLANS

~77% High  
Carpet  
Area Efficiency





MATERIALS

Luxury in  
Every Detail

LIVING & BEDROOM





# BATHROOM





Located Just a  
Short Drive From  
Sarjapur Road

Only 12 Mins From  
RGA Tech Park



ROOTED IN  
RESPONSIBILITY

# CARBON HEALING HOMES



## Sponge Effect

Designed to utilise  
every drop of water.



## Zero Out

Zero waste  
to landfill.



## Smart Power

Efficient utilisation of  
renewable energy sources.



## Climate Capsule

Higher green cover  
for lower temperatures.



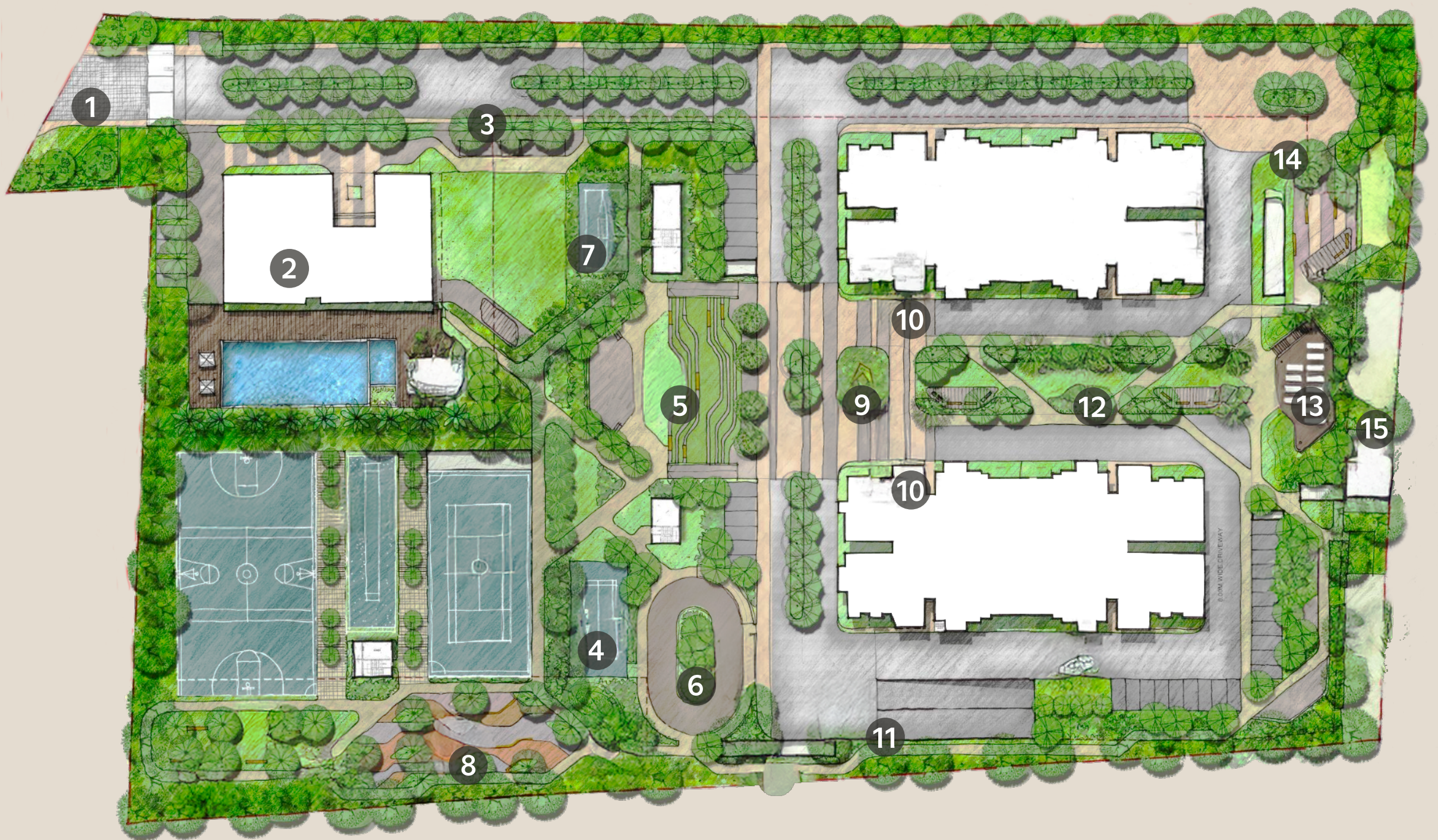


# Where Architectural Brilliance Meets Elevated Living



## MASTER PLAN

# Meticulously Crafted for Seamless Living



- |                         |                        |
|-------------------------|------------------------|
| 1 Entry/ Exit           | 9 Sculpture Park       |
| 2 Clubhouse             | 10 Tower Entry         |
| 3 Farmers' Market Space | 11 Basement Entry/Exit |
| 4 Paddle Court          | 12 Outdoor Seating     |
| 5 Amphitheatre          | 13 Yoga / Viewing Deck |
| 6 Skating Rink          | 14 Kids' Drop-off Area |
| 7 Pickleball Court      | 15 DG                  |
| 8 Kids' Play Area       |                        |



FLOOR PLANS

Efficient Layouts,  
Expansive Living

3BHK | Type 1

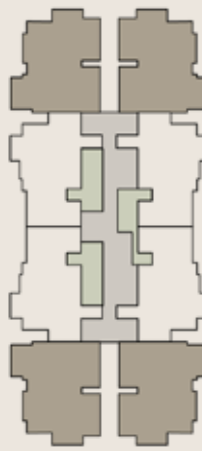


2142 sqft.

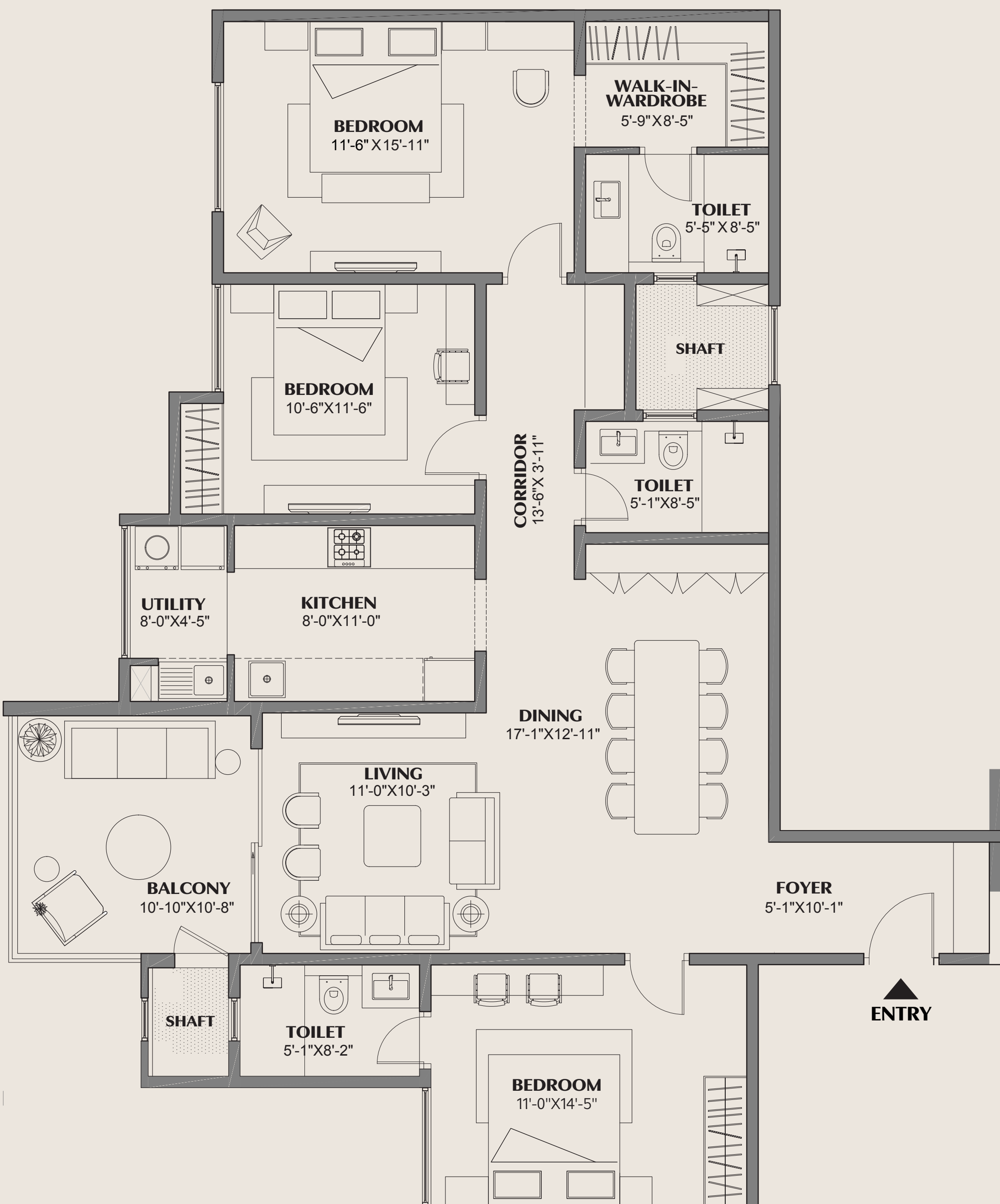
SBUA

1647 sqft.

TCA (CA+ Balcony)



3BHK | Type 2

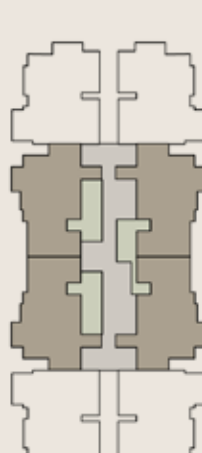


1885 sqft.

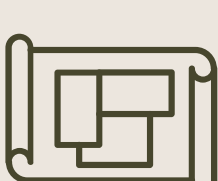
SBUA

1431 sqft.

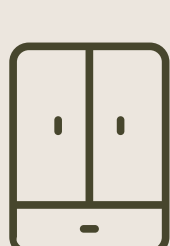
TCA (CA+ Balcony)



Large living balconies that let nature become part of your everyday life.



Spacious layouts that make room for all the things—and people—you love.



Tucked in wardrobes so the floor area is completely free.

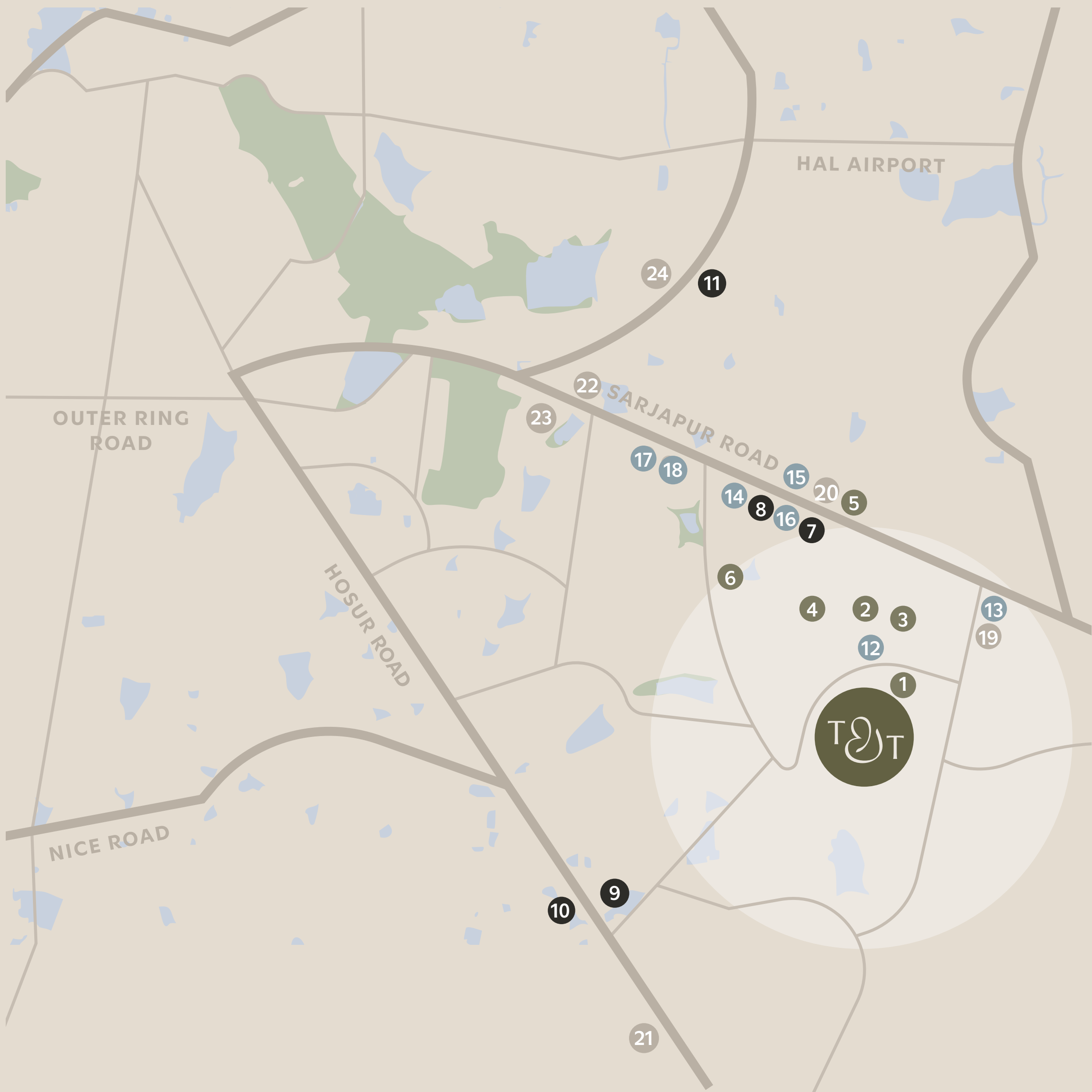


Master bedroom with a larger carpet area and a walk-in wardrobe.



LOCATION

Close to the City,  
Yet a World Apart.



EDUCATION

- 1 GIG International School (5 mins)
- 2 Delhi Public School (5 mins)
- 3 Ryan International Academy (7 mins)
- 4 Harvest International School (7 mins)
- 5 St. Patrick Academy (15 mins)
- 6 Primus International School (25 mins)

LEISURE

- 12 Red Riders Go Karting (5 mins)
- 13 Urban Turban (10 mins)
- 14 Street 1522 (20 mins)
- 15 Dmart (20 mins)
- 16 Decathlon (20 mins)
- 17 Sarjapur Social (25 mins)
- 18 Westside (25 mins)

IT PARKS

- 7 Wipro (15 mins)
- 8 RGA Tech Park (20 mins)
- 9 Tata Consultancy Services (25 mins)
- 10 Infosys (35 mins)
- 11 Embassy Tech Village (45 mins)

HEALTHCARE

- 19 Nishka Healthcare Multi Speciality (15 mins)
- 20 Belenus Champion Hospital (20 mins)
- 21 Narayana Institute of Cardiac Science (30 mins)
- 22 Motherhood (40 mins)
- 23 Manipal Hospital (45 mins)
- 24 Sakra World Hospital (40 mins)

Map not to scale. ETA as per Google Maps. May vary depending on the date and time of travel.



GALLERY





# About Assetz

At Assetz, we are committed to creating sustainable homes that have minimal impact on the environment. Every Assetz home is a Carbon Healing Home. Its features include utilising every drop of water, sending zero waste to landfill and ensuring a green cover that helps both you and the environment to breathe. Our team comprises over 300 professionals who bring outstanding expertise to their respective fields. The team also has an 12-year average of rich cross-industry skills across the board. As you have probably guessed by now, we also work with highly respected environmental specialists to make sure every Assetz home is eco-friendly. Our mission is to balance the need to break through the clutter of a highly competitive market where trends and fashion have a very short shelf life, with the demands of cost and investor confidence. A way to not succumb to this is to conceive architecture that expresses a sort of timelessness – responding to factors that are immutable to the site and the surrounding context and not to passing trends – in order to create something that cannot be replicated elsewhere.





Live In Tandem  
with Nature,  
In Tune with  
Yourself.